

Clenchwarton Primary School

Weekly Newsletter – 19th November 2020



Hello everyone,

Important message from Norfolk County Council:-

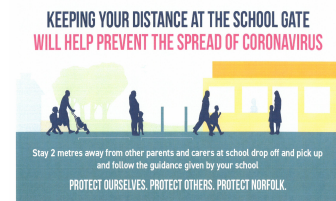
'Staying safe during school pick up and drop off Keeping a 2-metre distance from other parents and carers at busy times during school pick and drop off will help prevent the spread of coronavirus in your community. Wear a face covering if appropriate or if advised by your school and please don't be tempted to chat and linger with other parents in groups. Please also stick to the advised staggered pick up and drop off times to help reduce crowding outside the school gates. Coronavirus cases in Norfolk continue to rise and it's even more important that these simple guidelines are followed.' See poster on page 4.

On Thursday 17th December 2020 we are having a 'Christmas Craft Day' in school. A donation of £1 via ParentPay is kindly asked towards the cost of art/craft items. Thanks for your support.

If you have any concerns, please telephone or email the school office. If your child has an appointment booked or is off poorly, please let the office know.

Thank you and stay safe.

Ms J Borley
(Executive Headteacher)



**Wear your jumper
on the 17th December!**



**Payments can be made
on Parentpay**

Attendance

Reception:	99.59%
Year 1:	100%
Year 2:	99.12%
Year 3:	99.59%
Year 4:	98.35%
Year 5:	100%
Year 6:	98.86%

Congratulations to:-

Year 1 & Year 5

School Council

Children in Need 2020

So far we have raised £164.00.

Thank you for your support.



www.clenchwarton.norfolk.sch.uk

Governors email address: chairofgov@clenchwartonprimary.co.uk

P.T.A.

Hello everyone,

Bag2School—Collection for the bags is on Monday 23rd November 2020 @ 9am. No bags to be left on school premises before this date. Thank you.

We will keep you updated with upcoming events (in accordance with Government Guidelines). Please watch this space.

Thank you.
Rachel Ballantyne
(PTA Chair)



Community News

On Christmas's Eve Santa will be landing in Clenchwarton on his sleigh to spread joy and drop off a little gift of chocolate/sweeties. All we ask is everyone stays on their properties (adhering to Covid rules). Our Elves will be gloved with visors and treats will come out of boxes supplied directly from Greenland to minimise contact!!

SO LOOK OUT FROM 4.00pm ON CHRISTMAS EVE, he's coming to town there will be lots of noise and excitement!!!!

Hope you can help

Thanks

Sophie Adams
The Santa Run Clenchwarton



School Calendar

Please note that the West Norfolk Academies Trust school calendar for 2020/21 & 2021/2022 can be located from the school's website. School holiday dates are slightly different to NCC. Thank you.



ParentPay Lunches

Please book school lunches via ParentPay before midnight on a **Sunday**. Thank you.

Please make any outstanding payments on ParentPay ASAP.

All payments will need to be made online as we are now a cashless school.

Free Schools Meals on-Line

Please visit:-

<https://www.gov.uk/apply-free-school-meals>

Thank you.



If you should change your contact details, such as your address or telephone numbers, please inform the school immediately so that we are able to get in touch with you if there is an emergency. Similarly, if you start work or change your job please notify us of your up-to-date details, as we may need to contact you any time.

Thank you.

Lunchtime Co

Please see the school website for the menu.

Bookings via ParentPay, by midnight on a Sunday.

Thank you.



Water Bottles

Water bottles are available to purchase from school at £1.50 each (complete). Please email the office to order (office@clenchwartonprimary.co.uk) or telephone 01553 775035 so that you can then make payment via ParentPay as we are now cashless at this school. Thank you.



Don't forget to book in for Christmas dinner.

We are having it on Christmas Jumper Day. Please follow the link if you would like more details.


<https://forms.gle/C7LdLjWDgkUVinDa6>



Diary Dates

***Please be aware that dates are for guidance only and are subject to change.**

Diary dates are also located on the school website.

Monday 23rd November 2020	Collection on 23rd November 2020 @ 9am. No bags to be left on school premises before this date. Thank you. 
Thursday 17th December 2020	Christmas Jumper Day—Donations via ParentPay. Christmas Craft Day—£1 donation via ParentPay. Christmas lunch—Message now sent out via text message with link. Payment (if applicable) by ParentPay.
Friday 18th December 2020	Break up for Christmas Holidays.
Monday 4th January 2021	School reopens.

After Schools Clubs

Please see the school website.

PE/After School Clubs.

This is for your information:- Pupils to be shown how to dress appropriately for PE (appropriate clothing, long hair tied back away from the eyes, no hard head accessories)

Earrings. Ideally pupils will remove earrings however, pupils unable to remove earrings should make them safe by taping, front and back, which may offer a measure of protection. The taping should be sufficient to prevent the stud post penetrating the bone behind the ear should an unintentional blow be received from equipment such as a ball or a person. The taping may be done at home for younger children (as stated Safe Practice in PE and School Sport and Physical Activity 2016).

Morning Club

Spaces are available for the morning club which runs everyday in the hall from 7.40 am-8.40 am. If you would like your child to take part. Please email icscoachingsl@gmail.com or telephone 07876141107. If your child is not attending an afternoon club for any reason, please inform the school office with the reason. Thank you.

KEEPING YOUR DISTANCE AT THE SCHOOL GATE WILL HELP PREVENT THE SPREAD OF CORONAVIRUS



Stay 2 metres away from other parents and carers at school drop off and pick up
and follow the guidance given by your school

PROTECT OURSELVES. PROTECT OTHERS. PROTECT NORFOLK.