



# Clenchwarton Primary School

## Weekly Newsletter – 13th May 2022



Hello everyone,

A huge 'Well done' to all our Year 6 children who took their SAT's exams this week.

Please see page 4 with photos for an update with our Gardening Club. The grass caterpillars are growing nicely!

The Reception Class have also had a successful 'hatching' with all our eggs. 11 chicks have arrived safely.

See page 7 for further details of 'The Big Plastic Count'.

We will be celebrating the Queen's Platinum Jubilee and having a special lunch on Friday 27th May 2022. Please complete the google link that has now been sent via text by no later than Monday 16th May 2022. No alternative menu available on this day.

See Class Dojo 'School Story' for details of the Russen & Turner's Jubilee Colouring Competition. All drawings to be in school by no later than Thursday 26th May 2022 or please return direct to Russen & Turner. Thank you.

All designs for the 'Father's Day' coasters to be in school by no later than 18th May 2022.

As always, we want to ensure that your experience at Clenchwarton Primary is a positive one and we will keep you informed of your child's progress or any other incidents which happen in school. If you have any concerns, in the first instance, please telephone or email the school office.

Best wishes

Ms J Borley  
(Executive Headteacher)



### Have your circumstances changed recently?

You may be eligible for Free School Meals!

The school receives funding for each child who comes under Pupil Premium (including FSM). You can apply online:-

<https://www.gov.uk/apply-free-school-meals>.

#### **Families in hardship and needing wider support**

In addition to the offer of FSM vouchers for eligible families, there is support available for families who are facing hardship and need support. Anyone experiencing hardship may be able to receive support through the Norfolk Assistance Scheme (NAS), which may be able to provide support for food, fuel, clothes and other essential household items to families experiencing hardship. Wider support from a range of partners can then also be made available with NAS working alongside the Children's Services Community and Partnerships service. Families may get in touch with NAS via their dedicated website which includes an online application form, at [Norfolk Assistance Scheme - Norfolk County Council](#) or if they cannot access the internet, they can call 0344 800 8020.



## Attendance

|            |        |
|------------|--------|
| Reception: | 93.75% |
| Year 1:    | 86.13% |
| Year 2:    | 88.06% |
| Year 3:    | 98.52% |
| Year 4:    | 96%    |
| Year 5:    | 90.65% |
| Year 6:    | 98.93% |

**Congratulations to \*Year 6 \***

[www.clenchwartonprimary.co.uk](http://www.clenchwartonprimary.co.uk)

Governors email address: [chairgov@clenchwartonprimary.co.uk](mailto:chairgov@clenchwartonprimary.co.uk)



## P.T.A.

Hello everyone,

Dates for your diary:



17.05.22-Bag2School collection by no later 9 am to Clenchwarton Primary School. No bags before this date. Thank you.

18.05.22-Father's Day designs for coasters to be in school. PTA to collect.

25.05.22— Platinum Jubilee Disco-More details to follow

17.06.22—Summer Fair—TBC. More details to follow

06.07.22—Summer Disco-More details to follow. TBC

08.07.22—Year 6 Leavers BBQ-More details to follow

Please be aware all dates may be subject to change. Thank you for all your support.

Many thanks  
PTA



## Lunchtime Co

Please see the school website for the menu. If your child has any dietary requirements that we are not aware of, please inform the school office.

All Bookings should be made via ParentPay, by midnight on a **Sunday**.

Please book via ParentPay for the Jubilee lunch that is on offer on Friday 27th May 2022.

NB. Please note that due to food supply issues the kitchen are doing their very best to accommodate, but the menu may be subject to change.

Thank you.



## Wildlife Club

Tip for the week—Please put out a shallow bowl of water for wildlife each night.

Hedgehogs are endangered by humans. They dig water, paper and rubbish on the ground. To help hedgehogs you need to reduce and if you want you can leave cat food and water out so at night they can drink the water and eat the cat food. Hedgehogs love cat food and why at night because hedgehogs are nocturnal they are awake when it's night.



We are now able to offer a virtual clinic for any queries/advice/support for pre-existing or new concerns which you may have about your child's learning, including medical conditions and mental health concerns.

**Virtual SEND Clinic**  
Wednesdays 9-12

Should you wish to arrange an appointment please contact your schools office to arrange your 10 minute slot, then a link will be forwarded to you. All meetings will be held via Zoom.

## ParentPay Lunches

Please book school lunches via ParentPay before midnight on a **Sunday**. Thank you.

Please make any outstanding payments on ParentPay ASAP. All payments will need to be made online as we are now a cashless school.

Free Schools Meals on-Line

Please visit:- <https://www.gov.uk/apply-free-school-meals>.



## School Calendar

Please note that the West Norfolk Academies Trust school calendar for 2021/2022 & 2022/2023 can be located from the school's website. School holiday dates are slightly different to NCC.

Thank you.



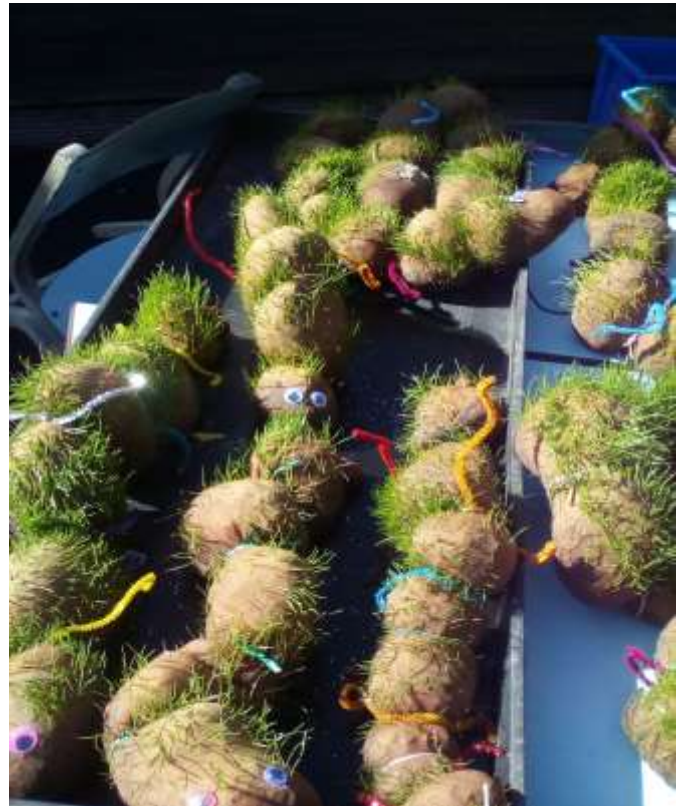
## Diary Dates

\*Please be aware that dates are for guidance only and are subject to change.

Diary dates are also located on the school website.

|                          |   |
|--------------------------|---|
| Monday 16th May 2022     | SATS week for Year 2  |
| Tuesday 17th May 2022    | Bag to School—Collection by no later than 9am. No bags to received before this date. Thank you.<br>Year 4 Class Assembly @ 2.50pm—Parents invited. 3.15pm-4.15pm open classroom-chance to look at your child learning.) |
| Wednesday 18th May 2022  | Year 3 Class Assembly @ 2.50pm-Parents invited.3.15pm-4.15pm open classroom-chance to look at your child learning.)   |
| Thursday 19th May 2022   | Year 2 Class Assembly @ 2.50pm-Parents invited. 3.15pm-4.15pm open classroom-chance to look at your child learning.)  |
| Monday 23rd May 2022     | SATs week for Year 2<br>Year 1 Class Assembly @ 2.50pm-Parents invited.3.15pm-4.15pm open classroom-chance to look at your child learning.)   |
| Tuesday 24th May 2022    | Year 5 Class Assembly @ 2.50pm-Parents invited.3.15pm-4.15pm open classroom-chance to look at your child learning.)3.15pm-4.15pm open classroom-chance to look at your child learning.)                                 |
| Wednesday 25th May 2022  | Year 6 Class Assembly @ 2.50pm-Parents invited.3.15pm-4.15pm open classroom-chance to look at your child learning.)   |
| Friday 27th May 2022     | Jubilee Celebration Lunch (please book via google link & payment (if applicable via ParentPay).<br>Jubilee Celebration afternoon with activities.   |
| Friday 27th May 2022     | Break up at usual time for half term.   |
| Monday 6th June 2022     | Return to school—8.50am prompt registration.  |
| Wednesday 15th June 2022 | Yr6—Trip to Theatre—Payment via ParentPay.  |
| Thursday 23rd June 2022  | Year 1-Trip to Stories of Lynn/Lynn Museum-More details to follow.  |
| Tuesday 5th July 2022    | Yr5-Trip to Gressenhall—More details to follow.<br>Year 4 Class Assembly @ 2.50pm-Parents invited.  |
| Wednesday 6th July 2022  | Year 6 Class Assembly @ 2.50pm-Parents invited.   |
| Thursday 7th July 2022   | Year 5 Class Assembly @ 2.50pm-Parents invited.   |
| Friday 8th July 2022     | EYFS—Trip to Sea Life Centre-Payment via ParentPay.<br>Year 4—Trip to Leicester Space Centre-Payment via ParentPay.   |
| Monday 11th July 2022    | Year 6—Hilltop (Monday to Friday)   |
| Tuesday 12th July 2022   | Year 5—Opportunity day at St Clements High School—During the school day. More details to follow.<br>Year 3 Class Assembly @ 2.50pm-Parents invited.   |
| Wednesday 13th July 2022 | Year Reception Class Assembly @ 2.50pm-Parents invited.   |
| Monday 18th July 2022    | Dance Festival—Yr 3—More details to follow<br>Year 1 Class Assembly @ 2.50pm-Parents invited.   |
| Tuesday 19th July 2022   | Sports Day—More details to follow   |
| Thursday 21st July 2022  | Break up for Summer Holidays at the usual time.   |







**After School Clubs from w/c Monday 25th April 2022 to Friday 15th July 2022.**

|                    |   |  |
|--------------------|---|--|
| <b>Monday's</b>    | = | Gardening Club with Mrs Calaby & Mrs Bolderstone –10 weeks only  |
| <b>Tuesday's</b>   | = | ICT Club with Mrs Bloodworth-Year 1 to Year 6 only-10 weeks only<br><b>*ICT club will run from 26.04.2022 to 05.07.2022-10 weeks</b> |
| <b>Tuesday's</b>   | = | Wildlife Club with Mrs Tarsey-KS1 & KS2-11 weeks only  |
| <b>Wednesday's</b> | = | Musical Theatre Workshop with Miss Welch—KS2 only-11 weeks   |
| <b>Wednesday's</b> | = | Story Art Club with Mrs Williams—EYFS & Yr 1 only.<br><b>*Story Art Club will run from 27.04.2022 to 18.05.2022-4 weeks only</b>     |
| <b>Wednesday's</b> | = | Multi Sports with ICS Coaching-11 weeks  |
| <b>Thursday's</b>  | = | Football with ICS Coaching-11 weeks  |
| <b>Thursday's</b>  | = | Craft Club with Mrs Jones-Year 1 & Year 2 only.<br><b>*Craft Club will run from 28.04.2022 to 30.06.2022—9 weeks only</b>            |
| <b>Friday's</b>    | = | Gymnastics with Premier Sports <a href="https://premier-education.com">premier-education.com</a> to book!* - 11 weeks                |

**PE—Summer Term 1**

**Thursday's—Year 1 and Year 5—ICS**

**Swimming Timetable for w/c 25th April 2022:-**

**Monday—Year 5**  
**Tuesday—Year 6**  
**Wednesday—Year 2**  
**Thursday—EYFS (AM) & Year 3 (PM)**  
**Friday—Year 1 (AM) & Year 4 (PM)**



*This is for your information:- Pupils to be shown how to dress appropriately for PE/Swimming (appropriate clothing, long hair tied back away from the eyes, no hard head accessories)*

**Earrings.** Ideally pupils will remove earrings however, pupils unable to remove earrings should make them safe by taping, front and back, which may offer a measure of protection. The taping should be sufficient to prevent the stud post penetrating the bone behind the ear should an unintentional blow be received from equipment such as a ball or a person. The taping may be done at home for younger children (as stated Safe Practice in PE and School Sport and Physical Activity 2016).

Morning Club Spaces are available for the morning club which runs everyday in the hall from 7.40 am-8.40 am. If you would like your child to take part. Please email [office@icscoaching@gmail.com](mailto:office@icscoaching@gmail.com) or telephone 077654851539 . If your child is not attending an afternoon club for any reason, please inform the school office with the reason. Thanks.



# BAG 2 SCHOOL

## FREE FUNDRAISING FOR SCHOOLS

In partnership with your school or organisation

### Clenchwarton Community Primary School



Bag 2 School is a company that specialises in the reuse and recycling of good quality second-hand clothing and we have arranged to make a collection from your school. All the bags will be weighed and you will be paid for the total weight collected. Remember, the more you collect the greater the benefit to your school.



By using this paper leaflet we are helping to reduce unnecessary extra plastic. Please use your own bag or bags (there is no limit). The leaflet is FSC accredited, please recycle it.

When the clothes have been removed from the bag the plastic will be packed and sent for recycling.

*We are collecting good quality items for RE-USE:*

**Men's, ladies' & children's clothing, paired shoes, handbags, belts & accessories.**

*(No uniforms, workwear, pillows, duvets or pieces of fabric please)*

***The more we weigh the more we pay!***

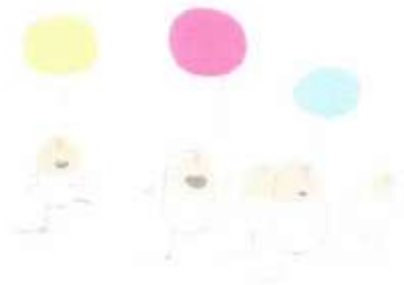
*Extra bags are welcome - there's no limit*

***Please return your Bag2School on:***



**Tuesday 17 May 2022 by 9am**





# THE BIG PLASTIC COUNT

GREENPEACE EVERYDAY PLASTIC

## WHAT IS THE BIG PLASTIC COUNT?

The Big Plastic Count is the UK's biggest ever household plastic waste investigation. Between 16th March and 22nd May, thousands of people in the UK are coming together to count their plastic waste.

Currently, the UK government ships thousands of tonnes of our household plastic waste abroad where it is dumped or burned illegally. This waste causes serious problems for local communities and the environment. Recycling alone will not solve the plastic crisis. We must reduce the amount of plastic that's being made in the first place. This year, the government is deciding on targets to reduce plastic waste, making this a crucial moment in the fight against plastic pollution.

With **KS2's** help, The Big Plastic Count will uncover the truth about how much household plastic is recycled, presenting evidence that will push the government to take bold and urgent action. The plastic waste crisis affects everyone so we want to make sure children have their voices heard and can be part of the solution.

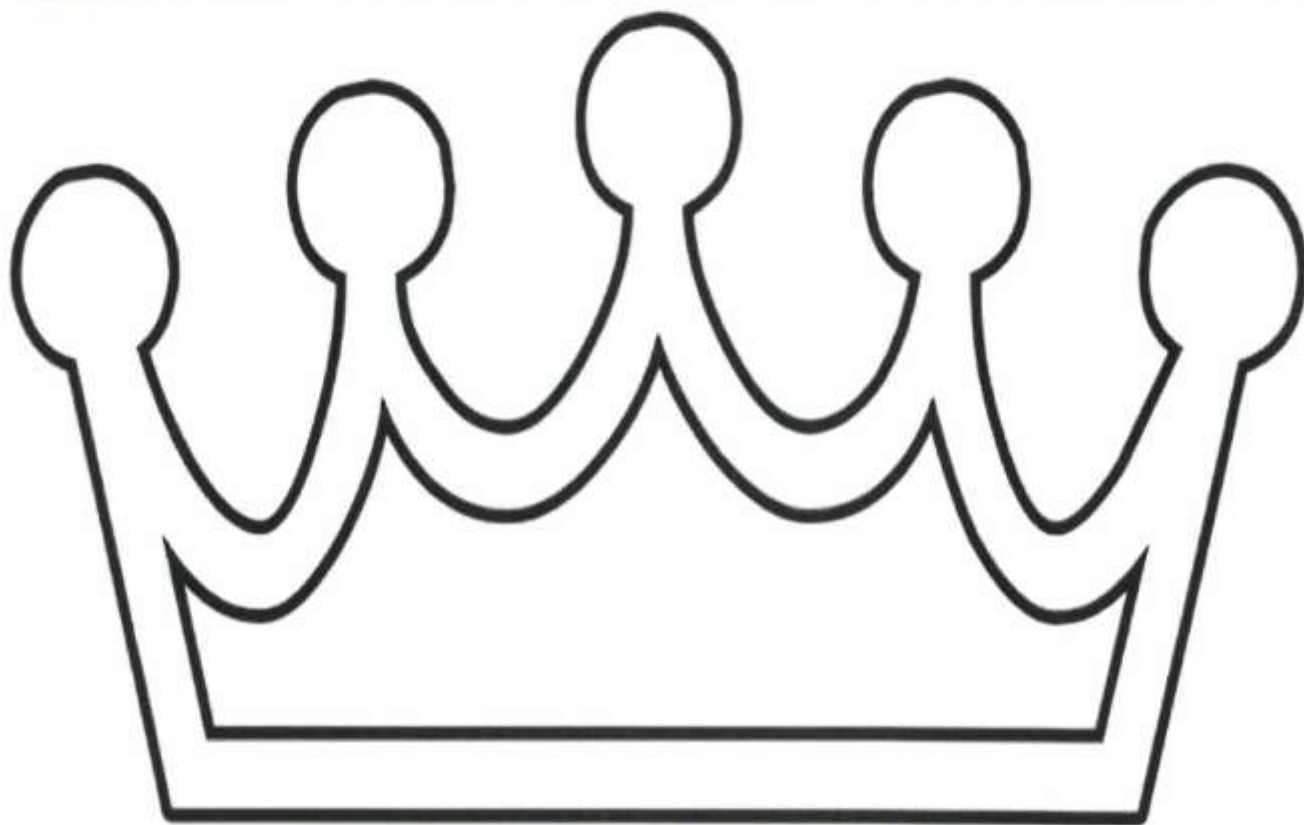
If your child in in KS2 they will be bringing home a letter and tally sheet, please support them to take part.



**RUSSEN & TURNER**  
www.russenandturner.co.uk



## COLOUR THE JUBILEE CROWN BELOW!



MAKE YOUR DESIGNS AS COLOURFUL & CREATIVE AS POSSIBLE!!  
TWO AGE GROUPS – RECEPTION-YEAR 2 / YEAR 3- YEAR 6.  
WINNER OF EACH AGE GROUP WILL RECEIVE A £50 DAY OUT VOUCHER!!  
CLOSING DATE 27<sup>TH</sup> OF MAY – WINNERS ANNOUNCED ON 31<sup>ST</sup> OF MAY.  
JUST POP YOUR DESIGNS TO US ON THE HIGH STREET KINGS LYNN!  
**Good luck!!**

Name .....

Age .....

Contact Number.....

Signature of a parent or guardian giving permission to enter the competition

.....

☐

Please tick if you are happy for Russen & Turner to take a photo of the winner with their picture and use it in the local press and on social media sites.



## Term Dates 2021-2022 – Trust Primary Schools

| September 2021 |    |    |    |    |    |    |
|----------------|----|----|----|----|----|----|
| M              | T  | W  | T  | F  | S  | S  |
|                |    | 1  | 2  | 3  | 4  | 5  |
| 6              | 7  | 8  | 9  | 10 | 11 | 12 |
| 13             | 14 | 15 | 16 | 17 | 18 | 19 |
| 20             | 21 | 22 | 23 | 24 | 25 | 26 |
| 27             | 28 | 29 | 30 |    |    |    |

| October 2021 |    |    |    |    |    |    |
|--------------|----|----|----|----|----|----|
| M            | T  | W  | T  | F  | S  | S  |
|              |    |    |    | 1  | 2  | 3  |
| 4            | 5  | 6  | 7  | 8  | 9  | 10 |
| 11           | 12 | 13 | 14 | 15 | 16 | 17 |
| 18           | 19 | 20 | 21 | 22 | 23 | 24 |
| 25           | 26 | 27 | 28 | 29 | 30 | 31 |

| November 2021 |    |    |    |    |    |    |
|---------------|----|----|----|----|----|----|
| M             | T  | W  | T  | F  | S  | S  |
| 1             | 2  | 3  | 4  | 5  | 6  | 7  |
| 8             | 9  | 10 | 11 | 12 | 13 | 14 |
| 15            | 16 | 17 | 18 | 19 | 20 | 21 |
| 22            | 23 | 24 | 25 | 26 | 27 | 28 |
| 29            | 30 |    |    |    |    |    |

| December 2021 |    |    |    |    |    |    |
|---------------|----|----|----|----|----|----|
| M             | T  | W  | T  | F  | S  | S  |
|               |    | 1  | 2  | 3  | 4  | 5  |
| 6             | 7  | 8  | 9  | 10 | 11 | 12 |
| 13            | 14 | 15 | 16 | 17 | 18 | 19 |
| 20            | 21 | 22 | 23 | 24 | 25 | 26 |
| 27            | 28 | 29 | 30 | 31 |    |    |

| January 2022 |    |    |    |    |    |    |
|--------------|----|----|----|----|----|----|
| M            | T  | W  | T  | F  | S  | S  |
|              |    |    |    |    | 1  | 2  |
| 3            | 4  | 5  | 6  | 7  | 8  | 9  |
| 10           | 11 | 12 | 13 | 14 | 15 | 16 |
| 17           | 18 | 19 | 20 | 21 | 22 | 23 |
| 24           | 25 | 26 | 27 | 28 | 29 | 30 |
| 31           |    |    |    |    |    |    |

| February 2022 |    |    |    |    |    |    |
|---------------|----|----|----|----|----|----|
| M             | T  | W  | T  | F  | S  | S  |
|               | 1  | 2  | 3  | 4  | 5  | 6  |
| 7             | 8  | 9  | 10 | 11 | 12 | 13 |
| 14            | 15 | 16 | 17 | 18 | 19 | 20 |
| 21            | 22 | 23 | 24 | 25 | 26 | 27 |
| 28            |    |    |    |    |    |    |

| March 2022 |    |    |    |    |    |    |
|------------|----|----|----|----|----|----|
| M          | T  | W  | T  | F  | S  | S  |
|            | 1  | 2  | 3  | 4  | 5  | 6  |
| 7          | 8  | 9  | 10 | 11 | 12 | 13 |
| 14         | 15 | 16 | 17 | 18 | 19 | 20 |
| 21         | 22 | 23 | 24 | 25 | 26 | 27 |
| 28         | 29 | 30 | 31 |    |    |    |

| April 2022 |    |    |    |    |    |    |
|------------|----|----|----|----|----|----|
| M          | T  | W  | T  | F  | S  | S  |
|            |    |    |    | 1  | 2  | 3  |
| 4          | 5  | 6  | 7  | 8  | 9  | 10 |
| 11         | 12 | 13 | 14 | 15 | 16 | 17 |
| 18         | 19 | 20 | 21 | 22 | 23 | 24 |
| 25         | 26 | 27 | 28 | 29 | 30 |    |

| May 2022 |    |    |    |    |    |    |
|----------|----|----|----|----|----|----|
| M        | T  | W  | T  | F  | S  | S  |
|          |    |    |    |    | 1  |    |
| 2        | 3  | 4  | 5  | 6  | 7  | 8  |
| 9        | 10 | 11 | 12 | 13 | 14 | 15 |
| 16       | 17 | 18 | 19 | 20 | 21 | 22 |
| 23       | 24 | 25 | 26 | 27 | 28 | 29 |
| 30       | 31 |    |    |    |    |    |

| June 2022 |    |    |    |    |    |    |
|-----------|----|----|----|----|----|----|
| M         | T  | W  | T  | F  | S  | S  |
|           | 1  | 2  | 3  | 4  | 5  |    |
| 6         | 7  | 8  | 9  | 10 | 11 | 12 |
| 13        | 14 | 15 | 16 | 17 | 18 | 19 |
| 20        | 21 | 22 | 23 | 24 | 25 | 26 |
| 27        | 28 | 29 | 30 |    |    |    |

| July 2022 |    |    |    |    |    |    |
|-----------|----|----|----|----|----|----|
| M         | T  | W  | T  | F  | S  | S  |
|           |    |    |    | 1  | 2  | 3  |
| 4         | 5  | 6  | 7  | 8  | 9  | 10 |
| 11        | 12 | 13 | 14 | 15 | 16 | 17 |
| 18        | 19 | 20 | 21 | 22 | 23 | 24 |
| 25        | 26 | 27 | 28 | 29 | 30 | 31 |

| August 2022 |    |    |    |    |    |    |
|-------------|----|----|----|----|----|----|
| M           | T  | W  | T  | F  | S  | S  |
| 1           | 2  | 3  | 4  | 5  | 6  | 7  |
| 8           | 9  | 10 | 11 | 12 | 13 | 14 |
| 15          | 16 | 17 | 18 | 19 | 20 | 21 |
| 22          | 23 | 24 | 25 | 26 | 27 | 28 |
| 29          | 30 | 31 |    |    |    |    |

Key: White dates – school open to pupils  
 Orange dates – pupil holiday  
 Purple dates – staff training day  
 Red dates – bank holiday

Staff training days are – Thursday 2nd September, Friday 3rd September, Friday 22<sup>nd</sup> October and Tuesday 4<sup>th</sup> January as whole training days.  
 Monday 25<sup>th</sup> July is disaggregated.