



# Clenchwarton Primary School

## Weekly Newsletter – 8th July 2022



Hello everyone,

What a very busy week!

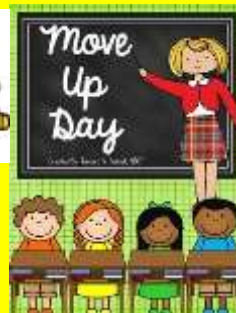
On Monday the JLT and Play leaders had a lovely treat and went to the cinema.

On Tuesday Year 3 visited Stories of Lynn & Lynn Museum and Year 5 visited Gressenhall.

On Wednesday—selected children had a Primary Maths Challenge event at Springwood and Yr 4 took part in the WNAT Primaries Concert at Springwood.

On Thursday the children had their move up day.

On Friday Year 4 visited the Space Centre in Leicester, Reception visited the Sea Life Centre and Year 1 and Year 2 took part with the Top Link Festival at Terrington.



Could we please remind you that on PE days, your child wears the correct kit (blue/black shorts/plain white/blue t-shirt) and not football kits and girls hair tied back—no jewellery.

Please be reminded of sun hats/sun cream and a water bottle on these warm and sunny days.

### **PREMISES UPDATE: -**

During the next few weeks and over the summer holidays we are having some buildings works to our school. This includes the removal of some mobiles and the installation new buildings. Please be mindful of the building works that will take place.

These are due to be completed by September 2022.

As this is nearly the end of term, please check the Lost Property box for missing items. (they are full!)

As always, we want to ensure that your experience at Clenchwarton Primary is a positive one and we will keep you informed of your child's progress or any other incidents which happen in school. If you have any concerns, in the first instance, please telephone or email the school office.



Best wishes  
Ms J Borley (Executive Headteacher)

## **Attendance**

Reception:	84.17%	Year 1:	99%	Year 2:	94.19%
Year 3:	96.67%	Year 4:	98%	Year 5:	93.87%
Year 6:	98.57%				

**Congratulations to \*Year 1\***



[www.clenchwartonprimary.co.uk](http://www.clenchwartonprimary.co.uk)

Governors email address: [chair@gov.clenchwartonprimary.co.uk](mailto:chair@gov.clenchwartonprimary.co.uk)



## Community News

Please be aware that the Playpark field will be closed from Monday 11th July 2022 for 3 weeks.

Restrictions apply.



## Lunchtime Co

Please see the school website for the menu. If your child has any dietary requirements that we are not aware of, please inform the school office.

All Bookings should be made via ParentPay, by midnight on a **Sunday**.

NB. Please note that due to food supply issues the kitchen are doing their very best to accommodate, but the menu may be subject to change.

Thank you.



## ParentPay Lunches

**Please** book school lunches via ParentPay before midnight on a **Sunday**. Thank you.

Please make any outstanding payments on ParentPay ASAP. All payments will need to be made online as we are now a cashless school.

### Free Schools Meals on-Line

Please visit:- <https://www.gov.uk/apply-free-school-meals>.



## P.T.A.

*Hello everyone,*

*We are always looking for volunteers.*

*Please be aware all dates may be subject to change.  
Thank you for all your support.*

*Many thanks  
PTA*



## Have your circumstances changed recently?

You may be eligible for Free School Meals!

The school receives funding for each child who comes under Pupil Premium (including FSM). You can apply online:-

<https://www.gov.uk/apply-free-school-meals>.

### Families in hardship and needing wider support

In addition to the offer of FSM vouchers for eligible families, there is support available for families who are facing hardship and need support. Anyone experiencing hardship may be able to receive support through the Norfolk Assistance Scheme (NAS), which may be able to provide support for food, fuel, clothes and other essential household items to families experiencing hardship. Wider support from a range of partners can then also be made available with NAS working alongside the Children's Services Community and Partnerships service. Families may get in touch with NAS via their dedicated website which includes an online application form, at [Norfolk Assistance Scheme - Norfolk County Council](#) or if they cannot access the internet, they can call **0344 800 8020**.



## Wildlife Club

Tip for the week:- Remember to leave out fresh water for wildlife and check before strimming.



## School Calendar

Please note that the West Norfolk Academies Trust school calendar for 2021/2022 & 2022/2023 can be located from the school's website. School holiday dates are slightly different to NCC.

Thank you.



## Diary Dates

**\*Please be aware that dates are for guidance only and are subject to change.**

**Diary dates are also located on the school website.**

<b>Monday 11th July 2022</b>	Year 6—Hilltop Residential (Monday to Friday)
<b>Tuesday 12th July 2022</b>	Year 5—Opportunity day at St Clements High School—During the school day. Year 3 Class Assembly @ 2.50pm-Parents invited.
<b>Thursday 14th July 2022</b>	Year 5 Class Assembly @ 2.50pm-Parents invited.
<b>Friday 15th July 2022</b>	NEW DATE-Year 2-Trip to Snettisham Park Farm-During the School day. Payment via ParentPay Year Reception Class Assembly @ 2.50pm-Parents invited.
<b>Monday 18th July 2022</b>	Dance Festival—Yr 3 Year 1 Class Assembly @ 2.50pm-Parents invited.
<b>Tuesday 19th July 2022</b>  	<b>Sports Day—Parents invited. Timings are as follows:-</b>  AM—for EYFS&KS1 (Reception, Yr1, Yr2) starting at <b>9.30am</b> PM—for KS2 (Yr3, Yr4, Yr5 & Yr6) starting at <b>1.30pm</b>
<b>Thursday 21st July 2022</b>	Yr6 Leavers Assembly - 9.30am Yr6 Leavers Lunch—Payment via Parentpay as a hot meal. Thank you.
<b>Thursday 21st July 2022</b>	Break up for Summer Holidays at the usual time.
<b>Monday 5th September 2022</b>	Welcome back to School.



**After School Clubs from w/c Monday 25th April 2022 to Friday 15th July 2022.**

<b>Monday's</b>	=	Gardening Club with Mrs Calaby & Mrs Bolderstone –10 weeks only
<b>Tuesday's</b>	=	ICT Club with Mrs Bloodworth-Year 1 to Year 6 only-10 weeks only <b>*ICT club will run from 26.04.2022 to 05.07.2022-10 weeks</b>
<b>Tuesday's</b>	=	Wildlife Club with Mrs Tarsey-KS1 & KS2-11 weeks only
<b>Wednesday's</b>	=	Musical Theatre Workshop with Miss Welch—KS2 only-11 weeks
<b>Wednesday's</b>	=	Story Art Club with Mrs Williams—EYFS & Yr 1 only. <b>*Story Art Club will run from 27.04.2022 to 18.05.2022-4 weeks only</b>
<b>Wednesday's</b>	=	Multi Sports with ICS Coaching-11 weeks
<b>Thursday's</b>	=	Football with ICS Coaching-11 weeks
<b>Thursday's</b>	=	Craft Club with Mrs Jones-Year 1 & Year 2 only. <b>*Craft Club will run from 28.04.2022 to 30.06.2022—9 weeks only</b>
<b>Friday's</b>	=	Gymnastics with Premier Sports <a href="https://premier-education.com">premier-education.com</a> to book!* - 11 weeks

**Swimming Timetable for w/c 25th April 2022:-**

**Monday—Year 5**  
**Tuesday—Year 6**  
**Wednesday—Year 2**  
**Thursday—EYFS (AM) & Year 3 (PM)**  
**Friday—Year 1 (AM) & Year 4 (PM)**



*This is for your information:- Pupils to be shown how to dress appropriately for PE/Swimming (appropriate clothing, long hair tied back away from the eyes, no hard head accessories)*

**Earrings.** Ideally pupils will remove earrings however, pupils unable to remove earrings should make them safe by taping, front and back, which may offer a measure of protection. The taping should be sufficient to prevent the stud post penetrating the bone behind the ear should an unintentional blow be received from equipment such as a ball or a person. The taping may be done at home for younger children (as stated Safe Practice in PE and School Sport and Physical Activity 2016).

**Morning Club** Spaces are available for the morning club which runs everyday in the hall from 7.40 am-8.40 am. If you would like your child to take part. Please email [office@icscoaching@gmail.com](mailto:office@icscoaching@gmail.com) or telephone 07765601699 . If your child is not attending an afternoon club for any reason, please inform the school office with the reason. Thanks.

**\*Please be reminded that this service will no longer be available with this supplier from September 2022.**

**\*See attached letter for details of the new supplier 'Premier' which commences from September 2022.**





## Start Active Clubs – New Partnership

Dear Parents,

Here at Premier, we are pleased to be supporting Clenchwarton Primary School with their before school club provision.

We have been working with the school for a long period and will be familiar to lots of you but here are some key facts about Premier that you may not have known.

- We are the largest UK Primary School Sports provider
- We operate 3 areas with the UK. West Norfolk, Peterborough and Cambridge
- We currently have 26 Activity Professionals with a dedicated senior team
- We work in just over 50 schools.
- We deliver over 300 sessions on a weekly basis

We look forward to extending our partnership with the school and we hope to impact the school, parents and children positively through Physical Activity.

With the change of providers there are some key notable changes to the provisions.

1. £3.75 per session, per child. You will be able to book through our online system which does offer sibling discount and you can just book and pay for what you need at the time or block book.
2. 7.40am – 8.40am each day
3. We will be offering themed sporting days and will always run a form of inclusive activity alongside this. (Arts and Craft or quiet time) – this will follow on leaflet.
4. Our team will regularly keep check on daily attendance. If we only have 1 signed up for a specific day, we will cancel and notify parents with a minimum of 48 hours' notice. This is due to our safeguarding policy.
5. After Autumn term we will review all provisions and feedback with school and parents on a breakfast option and the demand. All our staff have mitigation qualifications to allow preparation of food.

You will be able to book via the following link which will go live from Monday 11<sup>th</sup> July:

<https://www.premier-education.com/parents/>

Any questions, please contact our Operations Manager at: [hcollison@premier-education.com](mailto:hcollison@premier-education.com)

Let's educate  
and activate  
the world

Premier Education Group, Shropham, **Norwich** NR17 1EJ

01953 499 040 - [info@premier-activate.com](mailto:info@premier-activate.com) - [premier-activate.com](http://premier-activate.com)

Registered Office: Old Apple Store, Church Road, Shropham, Atherstone, Norfolk, NR17 1EJ  
Registered Number: 05102215  
VAT Number: 917 7797 56

## WNAT Community Music Week

@ Springwood High School Monday 4th-Thurs 7th July 22

Come along & enjoy some fabulous music in a festival style setting. Interested? For more details and to book tickets:

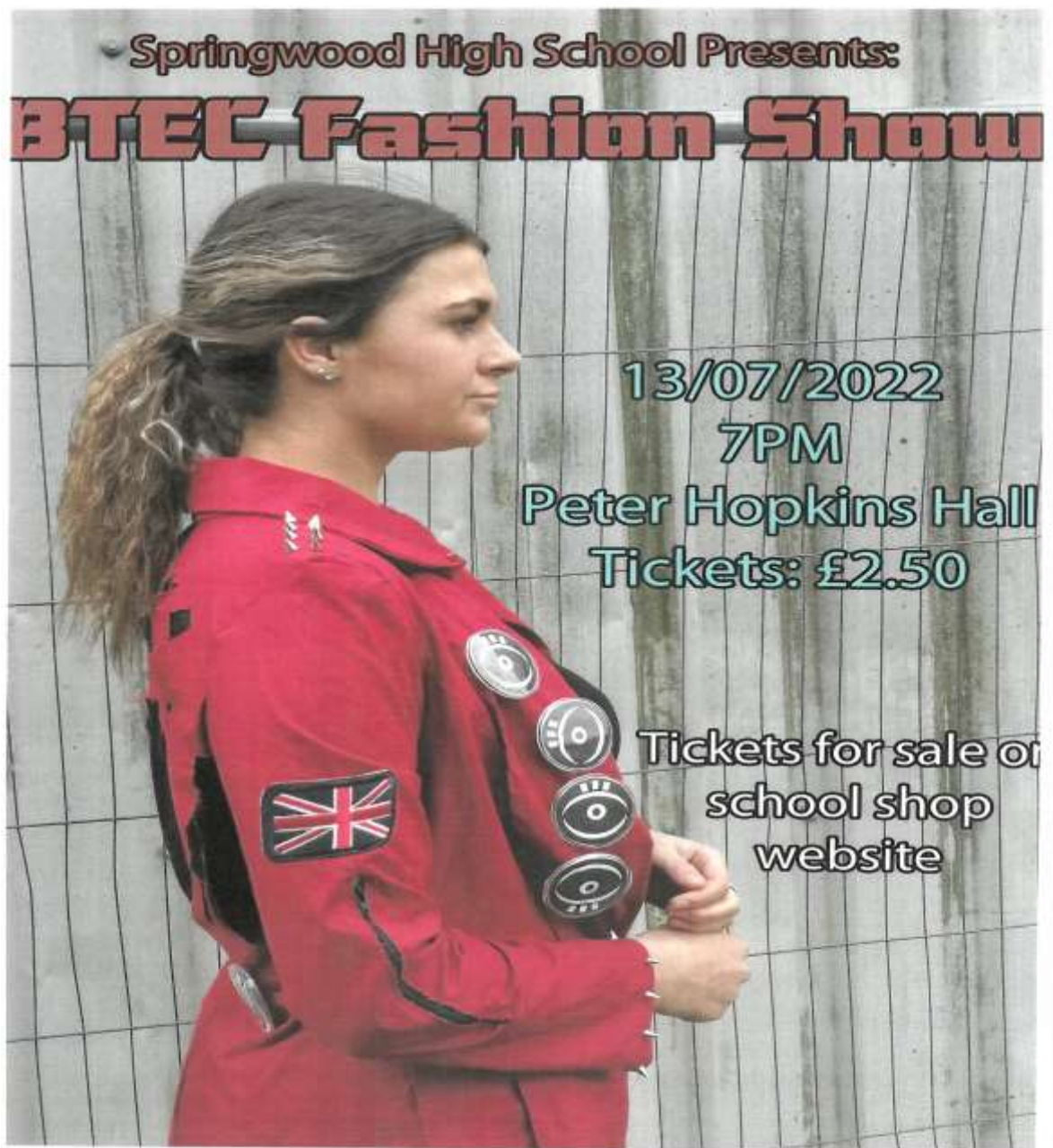
<https://www.ticketsource.co.uk/springwood-high-school-music-department>

BTEC Summer Fashion Show - Wednesday 13th July 2022

If you would like to see a bit of glitz and glamour, buy your tickets for the Springwood High School Summer Fashion Show from the school website (only £2.50 each) - see link below:

<https://app.parentpay.com/ParentPayShop/Uniform/Default.aspx?shopid=164>

All clothes designed and made by my 6th form BTEC students and the after-school Fashion Club!



# COMMUNITY NEWS



**SUPPORTING**



---

9th July 2022 10am

Starting at Jephson Hall, Walpole  
Cross Keys PE34 4HE

---

CHOOSE ONE OF 3 ROUTES  
AROUND THE VILLAGE

2.7KM    6.6KM    OR    8.8KM

Refreshments in Jephson Hall upon  
your return

£5pp    £10 Event T-shirt

contact 07875 312507 to enter



## Term Dates 2021-2022 – Trust Primary Schools

September 2021						
M	T	W	T	F	S	S
		1	2	3	4	5
6	7	8	9	10	11	12
13	14	15	16	17	18	19
20	21	22	23	24	25	26
27	28	29	30			

October 2021						
M	T	W	T	F	S	S
				1	2	3
4	5	6	7	8	9	10
11	12	13	14	15	16	17
18	19	20	21	22	23	24
25	26	27	28	29	30	31

November 2021						
M	T	W	T	F	S	S
1	2	3	4	5	6	7
8	9	10	11	12	13	14
15	16	17	18	19	20	21
22	23	24	25	26	27	28
29	30					

December 2021						
M	T	W	T	F	S	S
		1	2	3	4	5
6	7	8	9	10	11	12
13	14	15	16	17	18	19
20	21	22	23	24	25	26
27	28	29	30	31		

January 2022						
M	T	W	T	F	S	S
					1	2
3	4	5	6	7	8	9
10	11	12	13	14	15	16
17	18	19	20	21	22	23
24	25	26	27	28	29	30
31						

February 2022						
M	T	W	T	F	S	S
	1	2	3	4	5	6
7	8	9	10	11	12	13
14	15	16	17	18	19	20
21	22	23	24	25	26	27
28						

March 2022						
M	T	W	T	F	S	S
	1	2	3	4	5	6
7	8	9	10	11	12	13
14	15	16	17	18	19	20
21	22	23	24	25	26	27
28	29	30	31			

April 2022						
M	T	W	T	F	S	S
				1	2	3
4	5	6	7	8	9	10
11	12	13	14	15	16	17
18	19	20	21	22	23	24
25	26	27	28	29	30	

May 2022						
M	T	W	T	F	S	S
					1	
2	3	4	5	6	7	8
9	10	11	12	13	14	15
16	17	18	19	20	21	22
23	24	25	26	27	28	29
30	31					

June 2022						
M	T	W	T	F	S	S
	1	2	3	4	5	
6	7	8	9	10	11	12
13	14	15	16	17	18	19
20	21	22	23	24	25	26
27	28	29	30			

July 2022						
M	T	W	T	F	S	S
				1	2	3
4	5	6	7	8	9	10
11	12	13	14	15	16	17
18	19	20	21	22	23	24
25	26	27	28	29	30	31

August 2022						
M	T	W	T	F	S	S
1	2	3	4	5	6	7
8	9	10	11	12	13	14
15	16	17	18	19	20	21
22	23	24	25	26	27	28
29	30	31				

Key: White dates – school open to pupils  
 Orange dates – pupil holiday  
 Purple dates – staff training day  
 Red dates – bank holiday

Staff training days are – Thursday 2nd September, Friday 3rd September, Friday 22<sup>nd</sup> October and Tuesday 4<sup>th</sup> January as whole training days.  
 Monday 25<sup>th</sup> July is disaggregated.



## Term Dates 2022-2023 Trust Primary Schools

September 2022						
M	T	W	T	F	S	S
			1	2	3	4
5	6	7	8	9	10	11
12	13	14	15	16	17	18
19	20	21	22	23	24	25
26	27	28	29	30		

October 2022						
M	T	W	T	F	S	S
					1	2
3	4	5	6	7	8	9
10	11	12	13	14	15	16
17	18	19	20	21	22	23
24	25	26	27	28	29	30
31						

November 2022						
M	T	W	T	F	S	S
	1	2	3	4	5	6
7	8	9	10	11	12	13
14	15	16	17	18	19	20
21	22	23	24	25	26	27
28	29	30				

December 2022						
M	T	W	T	F	S	S
			1	2	3	4
5	6	7	8	9	10	11
12	13	14	15	16	17	18
19	20	21	22	23	24	25
26	27	28	29	30	31	

January 2023						
M	T	W	T	F	S	S
						1
2	3	4	5	6	7	8
9	10	11	12	13	14	15
16	17	18	19	20	21	22
23	24	25	26	27	28	29
30	31					

February 2023						
M	T	W	T	F	S	S
		1	2	3	4	5
6	7	8	9	10	11	12
13	14	15	16	17	18	19
20	21	22	23	24	25	26
27	28					

March 2023						
M	T	W	T	F	S	S
		1	2	3	4	5
6	7	8	9	10	11	12
13	14	15	16	17	18	19
20	21	22	23	24	25	26
27	28	29	30	31		

April 2023						
M	T	W	T	F	S	S
						1
3	4	5	6	7	8	9
10	11	12	13	14	15	16
17	18	19	20	21	22	23
24	25	26	27	28	29	30

May 2023						
M	T	W	T	F	S	S
1	2	3	4	5	6	7
	9	10	11	12	13	14
15	16	17	18	19	20	21
22	23	24	25	26	27	28
29	30	31				

June 2023						
M	T	W	T	F	S	S
			1	2	3	4
5	6	7	8	9	10	11
12	13	14	15	16	17	18
19	20	21	22	23	24	25
26	27	28	29	30		

July 2023						
M	T	W	T	F	S	S
					1	2
3	4	5	6	7	8	9
10	11	12	13	14	15	16
17	18	19	20	21	22	23
24	25	26	27	28	29	30
31						

August 2023						
M	T	W	T	F	S	S
	1	2	3	4	5	6
7	8	9	10	11	12	13
14	15	16	17	18	19	20
21	22	23	24	25	26	27
28	29	30	31			

Key: White dates – school open to pupils  
 Orange dates – pupil holiday  
 Purple dates – staff training day  
 Red dates – bank holiday

Staff training days are – Thursday 1st September, Friday 2nd September, Tuesday 3rd January and Monday 17th April as whole training days.  
 Friday 21st July 2023 is disaggregated.