



Clenchwarton Primary School

Weekly Newsletter - 23rd September 2022



Hello everyone,

Please see attached the new updated WNAT calendar for 2022/23. Apologies for any confusion with dates as this has now been rectified.

Well done to everyone who took part with the Sports Day on Wednesday.

Congratulations to Eliza who has won an Amazon voucher for her lovely Art-work.

As always, we want to ensure that your experience at Clenchwarton Primary is a positive one and we will keep you informed of your child's progress or any other incidents which happen in school. If you have any concerns, in the first instance, please telephone or email the school office.

Best wishes

Ms J Borley
(Executive Headteacher)



Attendance

Reception: 97.69%

Year 1: 100%

Year 2: 97.5%

Year 3: 93.95%

Year 4: 100%

Year 5: 92.08%

Year 6: 98.39%

**Congratulations to
*Year 1 & Year 4***

Lucy Hipperson, Professional Tutor at Springwood High School.

Get Into Teacher Event
Tuesday 18th Oct 6-7.30pm
'tickets' via eventbrite - link below

<https://www.eventbrite.co.uk/e/get-into-teaching-information-evening-tickets-423268907697>



www.clenchwartonprimary.co.uk

Governors email address: chairgov@clenchwartonprimary.co.uk



P.T.A.



PTA—AGM is on Tuesday 4th October 2022 and will be held in the school hall at 6pm. New members are urgently needed for this to continue.

If you are able to give up some valuable time to help this would be gratefully received. Without the PTA support, we will not be able to carry out School disco's or support Christmas Panto and other funding events.

Many thanks



Have your circumstances changed recently?

You may be eligible for Free School Meals!

The school receives funding for each child who comes under Pupil Premium (including FSM). You can apply online:-

<https://www.gov.uk/apply-free-school-meals>.

Families in hardship and needing wider support

In addition to the offer of FSM vouchers for eligible families, there is support available for families who are facing hardship and need experiencing hard- receive support Assistance which may be able for food, fuel, essential house- hold items to families experiencing hardship. Wider support from a range of partners can then also be made available with NAS working alongside the Children's Services Community and Partnerships service. Families may get in touch with NAS via their dedicated website which includes an online application form, at [Norfolk Assistance Scheme - Norfolk County Council](#) or if they cannot access the internet, they can call **0344 800 8020**.



Attendance & Pastoral Support

My name is Gail Scott I am the new Attendance and Pastoral support officer for Clenchwarton Primary School. I'm here to help and support you to deal with any worries or concerns you might have which affect your child's learning and well-being.

I can be contacted by emailing:-

g.scott@westnorfolkacademiestrust.co.uk



Lunchtime Co

Please see the school website for the menu. If your child has any dietary requirements that we are not aware of, please inform the school office.

All Bookings should be made via ParentPay, by midnight on a **Sunday**.

NB. Please note that due to food supply issues the kitchen are doing their very best to accommodate, but the menu may be subject to change.

Thank you.



ParentPay Lunches

Please book school lunches via ParentPay before midnight on a **Sunday**. Thank you.

Please make any outstanding payments on ParentPay ASAP. All payments will need to be made online as we are now a cashless school.

Free Schools Meals on-Line

Please visit:- <https://www.gov.uk/apply-free-school-meals>.



School Council

More details to follow.



Head lice

Please check your child's hair as soon as possible and treat,



School Calendar

Please note that the West Norfolk Academies Trust school calendar for 2022/2023 & 2023/2024 can be located from the school's website. School holiday dates are slightly different to NCC.

Thank you.



Springwood Sixth Form Open Evening Thursday 13th Oct 2022 Talks & Tours @ 5.30pm, 6.30pm and 7.30pm

To book:-

<https://www.eventbrite.co.uk/e/springwood-sixth-form-open-evening-tickets-407977390357>



Diary Dates

***Please be aware that dates are for guidance only and are subject to change.**

Diary dates are also located on the school website.

Thursday 29th September 2022	Yr6—Play at the Guildhall, King's Lynn during the school day—More details to follow
Monday 3rd October to Friday 7th October 2022	Scholastic Book Fair—Starts Monday afternoon after school 3.15pm-3.45 Mornings—8.30am—8.45am and Afternoons 3.15pm—3.45pm. Ends Friday Morning at 8.45am
Tuesday 4th October 2022	PTA—AGM—6pm—School Hall. New members invited.
Friday 7th October 2022	Quicksticks Hockey—Lynn Sports—Selected
Thursday 6th October 2022	Yr 1 & Yr 2 (selected) - Active Kids Festival—Alive Leisure.
Friday 7th October 2022	Yr4 Trip to West Stow. Payment via Parentpay.
Wednesday 12th October 2022	NHS Flu Immunisation Programme - 1st Session—More details to follow
Thursday 13th October 2022	Yrs 5 Masjid Ghousia Mosque—More details to follow
Monday 17th October 2022	Yr2-Trip to Ken Hill—More details to follow
Tuesday 18th October 2022	Yr6 - NHS National Child Measurement Programme
Thursday 21st October 2022	Break up for half term at the usual time.
Monday 31st October 2022	Back to school.
Wednesday 2nd November 2022	Lilacmoon Photography—Individual and siblings from 8.30am
Monday 7th November 2022 to Thursday 10th November 2022	Bikeability (limited spaces) for Year 5 and Year 6 .
Friday 2nd December 2022	Bikeability (limited spaces) for Year 3.
Monday 12th December 2022	Whole School—Purple Dreams Christmas Panto—The Little Mermaid
Wednesday 23rd November 2022	NHS Flu Immunisation Programme - 2nd Session—More details to follow
Thursday 24th November 2022	Zoo Lab—Year 1—More details to follow
Friday 16th December 2022	Break up for Christmas break.
Wednesday 4th January 2023	Back to school.

Before & After School Clubs at your School...

- Kickstart the day with our brilliant before-school sessions
- Let loose with lunchtime activities
- Keep on moving with awesome after-school clubs

Over the past 20 years, we've expanded our term-time offer of school activities to include sessions held before the school day begins, in lessons – covering or supplementing existing lessons, at lunchtimes as an extra chance to get active, or after-school, giving parents a more convenient pickup time while the kids keep engaged.

What's happening at your school:
 Clenchwarton Primary School
 Before school club
 Monday – Friday 7.40am – 8.40am
 Sport Active after school clubs
 Tuesday Racket Sports Y3-6
 Friday Gymnastics – Open to all
 All information can be found when booking!

Limited To 20 Spaces
 Avoid disappointment, visit
premier-education.com to book!

Before, Lunchtime & After School Clubs for Children Age 4 - 11.
 To book now, visit premier-education.com
 Follow our socials - search Premier - Cambridgeshire & West Norfolk

Premier Education



After School Clubs will run from w/c Monday 12th September 2022 to Friday 21st October 2022.

Autumn 1 term-6 weeks

- Monday's** = Cooking Club with Mrs Adair—KS2 only. Full
- Tuesday's** = ICT Club with Mrs Bloodworth-Year 1 to Year 6 only. Full
Wildlife Club with Mrs Tarsey-KS1 & KS2—Full
Journalism Club with Mrs Waterston-Year 5 & Year 6 only—Spaces still available
Racket Club with Premier Sports-KS2 only premier-education.com to book!* Spaces still available
- Wednesday's** = Multi Sports with ICS Coaching-KS2 only—1 space available
- Thursday's** = Football with ICS Coaching-KS1 only—Spaces still available
- Friday's** = Gymnastics with Premier Sports premier-education.com to book! Full

This is for your information:- Pupils to be shown how to dress appropriately for PE/Swimming (appropriate clothing, long hair tied back away from the eyes, no hard head accessories)

Earrings. Ideally pupils will remove earrings however, pupils unable to remove earrings should make them safe by taping, front and back, which may offer a measure of protection. The taping should be sufficient to prevent the stud post penetrating the bone behind the ear should an unintentional blow be received from equipment such as a ball or a person. The taping may be done at home for younger children (as stated Safe Practice in PE and School Sport and Physical Activity 2016).

Swimming—Autumn Term 1

- EYFS—Thursday**
Year 1—Friday
Year 2—Wednesday
Year 3—Thursday
Year 4—Friday
Year 5—Tuesday
Year 6—Monday (starting 12th Sept)



PE—Autumn Term 1

- EYFS—Wednesday**
Year 1—Thursday
Year 2—Thursday
Year 3—Monday
Year 4—Wednesday
Year 5—Thursday
Year 6—Tuesday



Morning Club Spaces are available for the morning club which runs everyday in the hall from 7.40 am-8.40 am. If you would like your child to take part. Please book via Premier—premier-education.com

If your child is not attending an afternoon club for any reason, please inform the school office with the reason. Thanks.



COFFEE MORNINGS TO BEAT CANCER SOONER

The Partridge, Clenchwarton

Saturday 1st October 2022

10am – 1pm, raffle draw at 12noon

Join us for tea/coffee and a selection of delicious home-made cakes, savoury snacks and prize raffle draw in aid of
Cancer Research UK, in memory of Rebecca Wright.

Raffle prizes/donations gratefully received; please contact

Jemma Curtis 07786 365200

cruk.org

In aid of



**CANCER
RESEARCH
UK**



Cancer Research UK is a registered charity in England and Wales (1089464) and Scotland (SC0416663).



TRAVELLING BOOKS

COME TO THE BOOK FAIR

FILL YOUR
SCHOOL WITH
FREE BOOKS
WHEN YOU BUY
FROM THE
BOOK FAIR*

FIND HUNDREDS
OF THE
BEST NEW BOOKS
FROM JUST
£2.99!

LAST YEAR, YOUR SUPPORT HELPED TO DONATE OVER
£2.2M BOOKS TO SCHOOLS NATIONWIDE



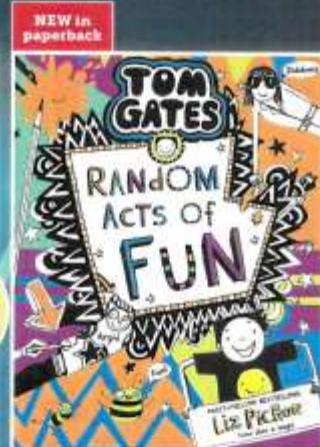
£14.99 **£8.99**



£12.99 **£7.99**



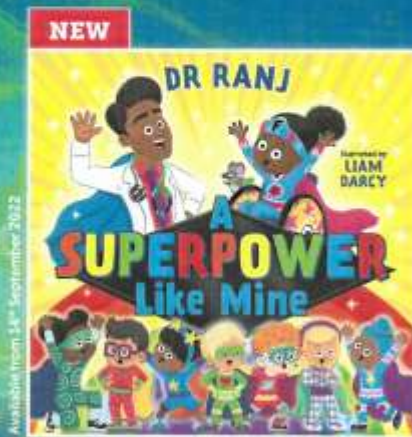
£6.99 **£3.99**



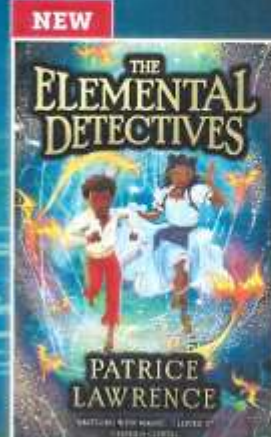
£7.99



£6.99



£6.99



£7.99

OVER 200 BOOKS TO CHOOSE FROM!



WISBECH
GRAMMAR SCHOOL

THE
GOOD
SCHOOLS
GUIDE

Open Morning

From Kindergarten to 6th Form

Saturday 01 October: 0900 - 1230

Register now: wisbechgrammar.com

**Discover
who we are...**



*Scan to
register*



School transport
routes across **Norfolk**,
Cambridgeshire and
Lincolnshire



01945 586750



admissions@wisbechgrammar.com