



Clenchwarton Primary School

Weekly Newsletter – 30th September 2022



Hello everyone,

The morning routine is as follows:-

8:35am - gates will open as usual.

8:40am - a bell will ring and children will line up with either their class teacher or teaching assistant. The adult will then walk the children into school.



Year 5 & 6 - line up outside their classroom

Year 1 - line up near the bike shed entrance

Year R - line up on the left hand side of the playground closest to the black railing.

Year - 3 & 4 - line up in their usual place

Year 2 - line up next to year 4

An adult will be clearly visible in the morning to help with this new routine.

This will mean that staff are able to walk their whole class to the classrooms and start the morning together and ease congestion in the cloakrooms.

Please see page 2 for a school uniform reminder.



Many thanks for your support. As always, we want to ensure that your experience at Clenchwarton Primary is a positive one and we will keep you informed of your child's progress or any other incidents which happen in school. If you have any concerns, in the first instance, please telephone or email the school office.

Best wishes

Ms J Borley (Executive Headteacher)

Parent Governor Vacancy

We are pleased to let you know we currently have a Parent Governor vacancy. The Governors of Clenchwarton Primary School hold regular meetings in which they discuss and make decisions concerning the curriculum, school policies and many other issues that directly affect the well-being of the children at the school. Being a school Governor involves having a privileged insight into the running of the school and any prospective Governor must understand the need for confidentiality. The Governing Body will also expect that any new Governor would be willing to attend a short training course. Please consider whether you might make a good Governor and if you are interested in applying please email or call the school office for an application form. Should there be more applicants than spaces available, an election will be held. **Closing date: Friday 21st October 2022.**



Umbrellas



Did you know that one in five of us have a neurodevelopmental condition, such as ADHD, Autism, Dyslexia, Dyspraxia, Dyscalculia or Tourette's syndrome? These conditions fall under the **umbrella** term of neurodiversity.

We would like to say a **huge thank you** to Mr and Mrs Rust who support this wonderful charity and have kindly sponsored us to be able to display these colourful umbrellas to show that at Clenchwarton Primary School we are committed to changing the perception of neurodiverse/ neurodivergent people and celebrating all the many strengths that come from thinking differently.

Attendance

Reception: 97.04% Year 1: 100%

Year 2: 98.67% Year 3: 98.06%

Year 4: 100% Year 5: 95.67%

Year 6: 96.13%

Congratulations to *Year 1 & Year 4*



www.clenchwartonprimary.co.uk

Governors email address: chairofgov@clenchwartonprimary.co.uk





Uniform Reminder:

We believe that wearing school uniform is an important element in nurturing a sense of identity and responsibility. We have a uniform policy that is accessible to all families and one which we believe represents value for money. We understand that the cost of living is ever increasing at the moment, so please come and see us if you would like some help with uniform as we are able to support families with the cost of this.

Please can we remind you of what we expect the children to wear:

Girls:

Black or grey skirt/trousers/pinafore dress/shorts
 Royal blue cardigan/sweatshirt with school logo is preferred
 Blue or white blouse
 Royal blue/pale blue or white polo shirt (with or without the school logo)
 Sensible black school shoes

PE:

Blue or white t-shirt/polo shirt
 Navy blue or black shorts
 When the weather is colder, children can wear a navy tracksuit.
 Plimsolls or trainers.

Boys:

Black or grey trousers/shorts
 Royal blue sweatshirt with school logo is preferred
 Blue or white shirt
 Royal blue/pale blue or white polo shirt (with or without the school logo)
 Sensible black school shoes

PE:

Blue or white t-shirt/polo shirt
 Navy blue or black shorts
 When the weather is colder, children can wear a navy tracksuit.
 Plimsolls or trainers.



Please note - School Uniform is sold at Stratfords in King's Lynn. Phone: 01553 772043. or visit:-

<https://www.stratfords.com/collections/clenchwarton-school>

P.T.A.



**PTA—AGM is on Tuesday 4th October 2022 and will be held in the school hall at 6pm.
New members are urgently needed for this to continue.**

If you are able to give up some valuable time to help this would be gratefully received. Without the PTA support, we will not be able to carry out School disco's or support Christmas Panto and other funding events.

Many thanks

PTA



Attendance & Pastoral Support

My name is Gail Scott I am the new Attendance and Pastoral support officer for Clenchwarton Primary School. I'm here to help and support you to deal with any worries or concerns you might have which affect your child's learning and well-being.

I can be contacted by emailing:-

g.scott@westnorfolkacademiestrust.co.uk



Lunchtime Co

Please see the school website for the menu. If your child has any dietary requirements that we are not aware of, please inform the school office.

All Bookings should be made via ParentPay, by midnight on a **Sunday**.

NB. Please note that due to food supply issues the kitchen are doing their very best to accommodate, but the menu may be subject to change.

Thank you.



Have your circumstances changed recently?

You may be eligible for Free School Meals!

The school receives funding for each child who comes under Pupil Premium (including FSM). You can apply online:-

<https://www.gov.uk/apply-free-school-meals>.

Families in hardship and needing wider support

In addition to the offer of FSM vouchers for eligible families, there is support available for families who are facing hardship and need support. Anyone experiencing hardship may be able to receive support through the Norfolk Assistance Scheme (NAS), which may be able to provide support for food, fuel, clothes and other essential household items to families experiencing hardship. Wider support from a range of partners can then also be made available with NAS working alongside the Children's Services Community and Partnerships service. Families may get in touch with NAS via their dedicated website which includes an online application form, at [Norfolk Assistance Scheme - Norfolk County Council](#) or if they cannot access the internet, they can call **0344 800 8020**.



ParentPay Lunches

Please book school lunches via ParentPay before midnight on a **Sunday**. Thank you.

Please make any outstanding payments on ParentPay ASAP. All payments will need to be made online as we are now a cashless school.

Free Schools Meals on-Line

Please visit:- <https://www.gov.uk/apply-free-school-meals>.



School Calendar

Please note that the West Norfolk Academies Trust school calendar for 2022/2023 & 2023/2024 can be located from the school's website. School holiday dates are slightly different to NCC.

Thank you.



Springwood Sixth Form Open Evening Thursday 13th Oct 2022 Talks & Tours @ 5.30pm, 6.30pm and 7.30pm

To book:-


<https://www.eventbrite.co.uk/e/springwood-sixth-form-open-evening-tickets-407977390357>



Diary Dates

***Please be aware that dates are for guidance only and are subject to change.**

Diary dates are also located on the school website.

Thursday 29th September 2022	Yr6—Play at the Guildhall, King's Lynn during the school day—More details to follow
Monday 3rd October to Friday 7th October 2022	Scholastic Book Fair—Starts Monday afternoon after school 3.15pm-3.45 Mornings—8.30am—8.45am and Afternoons 3.15pm—3.45pm. Ends Friday Morning at 8.45am 
Tuesday 4th October 2022	PTA—AGM—6pm—School Hall. New members invited.
Friday 7th October 2022	Quicksticks Hockey—Lynn Sports—Selected
Thursday 6th October 2022	Yr 1 & Yr 2 (selected) - Active Kids Festival—Alive Leisure.
Friday 7th October 2022	Yr4 Trip to West Stow. Payment via ParentPay.
Monday 10th October 2022	Hello Yellow Day— Just Giving Page— https://www.justgiving.com/fundraising/hy2022-266228
Wednesday 12th October 2022	NHS Flu Immunisation Programme - 1st Session—More details to follow
Monday 17th October 2022	Yr2-Trip to Ken Hill—Payment via ParentPay.
Tuesday 18th October 2022	Yr6 - NHS National Child Measurement Programme
Thursday 21st October 2022	Break up for half term at the usual time.
Monday 31st October 2022	Back to school.
Wednesday 2nd November 2022	Lilacmoon Photography—Individual and siblings from 8.30am
Thursday 17th November 2022	Yrs 5 Masjid Ghousia Mosque—More details to follow
Thursday 25th November 2022	Yr 1—ZooLab workshop (in school) joint with West Lynn & Walpole Cross Keys. More details to follow.
Monday 7th November 2022 to Thursday 10th November 2022	Bikeability (limited spaces) for Year 5 and Year 6 .
Friday 2nd December 2022	Bikeability (limited spaces) for Year 3.
Monday 12th December 2022	Whole School—Purple Dreams Christmas Panto—The Little Mermaid
Wednesday 23rd November 2022	NHS Flu Immunisation Programme - 2nd Session—More details to follow
Thursday 24th November 2022	Zoo Lab—Year 1—More details to follow
Friday 16th December 2022	Break up for Christmas break.
Wednesday 4th January 2023	Back to school.



Before & After School Clubs at your School...

What's happening at your school:
 Clenchwater Primary School
 Before school club
 Sunday - Friday 7.40am - 8.40am
 Sport Active after school clubs
 Tuesday Rocket Sports Y3-5
 Friday Gymnastics - Open to all
 All information can be found when booking!

Over the past 20 years, we've expanded our term-time offer of school activities to include sessions held before the school day begins, in lessons - covering or supplementing existing lessons, at lunchtimes as an extra chance to get active, or after-school, giving parents a more convenient pickup time while the kids keep engaged.

Before, Lunchtime & After School Clubs for Children Age 4 - 11.
 To book now, visit premier-education.com

Follow our socials - search Premier - Cambridgeshire & West Norfolk

 Premier Education



After School Clubs will run from w/c Monday 12th September 2022 to Friday 21st October 2022.

Autumn 1 term-6 weeks

- Monday's** = Cooking Club with Mrs Adair—KS2 only. Full
- Tuesday's** = ICT Club with Mrs Bloodworth-Year 1 to Year 6 only. Full
Wildlife Club with Mrs Tarsey-KS1 & KS2—Full
Journalism Club with Mrs Waterston-Year 5 & Year 6 only—Spaces still available
Racket Club with Premier Sports-KS2 only premier-education.com to book!* Spaces still available
- Wednesday's** = Multi Sports with ICS Coaching-KS2 only—1 space available
- Thursday's** = Football with ICS Coaching-KS1 only—Spaces still available
- Friday's** = Gymnastics with Premier Sports premier-education.com to book! Full

This is for your information:- Pupils to be shown how to dress appropriately for PE/Swimming (appropriate clothing, long hair tied back away from the eyes, no hard head accessories)

Earrings. Ideally pupils will remove earrings however, pupils unable to remove earrings should make them safe by taping, front and back, which may offer a measure of protection. The taping should be sufficient to prevent the stud post penetrating the bone behind the ear should an unintentional blow be received from equipment such as a ball or a person. The taping may be done at home for younger children (as stated Safe Practice in PE and School Sport and Physical Activity 2016).

Swimming—Autumn Term 1

- EYFS—Thursday**
Year 1—Friday
Year 2—Wednesday
Year 3—Thursday
Year 4—Friday
Year 5—Tuesday
Year 6—Monday (starting 12th Sept)



PE—Autumn Term 1

- EYFS—Wednesday**
Year 1—Thursday
Year 2—Thursday
Year 3—Monday
Year 4—Wednesday
Year 5—Thursday
Year 6—Tuesday



Morning Club Spaces are available for the morning club which runs everyday in the hall from 7.40 am-8.40 am. If you would like your child to take part. Please book via Premier—premier-education.com

If your child is not attending an afternoon club for any reason, please inform the school office with the reason. Thanks.



COFFEE MORNINGS TO BEAT CANCER SOONER

The Partridge, Clenchwarton

Saturday 1st October 2022

10am – 1pm, raffle draw at 12noon

Join us for tea/coffee and a selection of delicious home-made cakes, savoury snacks and prize raffle draw in aid of
Cancer Research UK, in memory of Rebecca Wright.

Raffle prizes/donations gratefully received; please contact

Jemma Curtis 07786 365200

cruk.org

In aid of



**CANCER
RESEARCH
UK**



Cancer Research UK is a registered charity in England and Wales (1089464) and Scotland (SC0416663).



TRAVELLING BOOKS

COME TO THE BOOK FAIR

FILL YOUR
SCHOOL WITH
FREE BOOKS
WHEN YOU BUY
FROM THE
BOOK FAIR*

FIND HUNDREDS
OF THE
BEST NEW BOOKS
FROM JUST
£2.99!

LAST YEAR, YOUR SUPPORT HELPED TO DONATE OVER
£2.2M BOOKS TO SCHOOLS NATIONWIDE



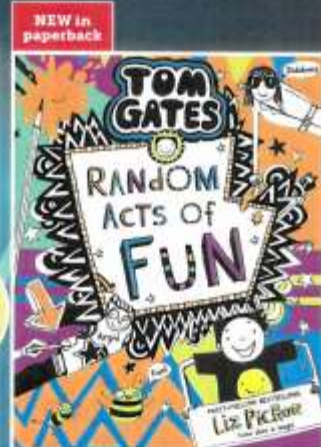
£14.99 **£8.99**



£12.99 **£7.99**



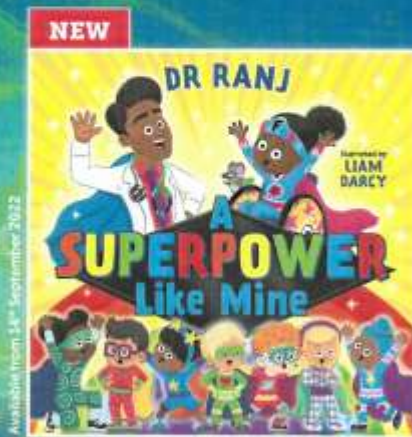
£6.99 **£3.99**



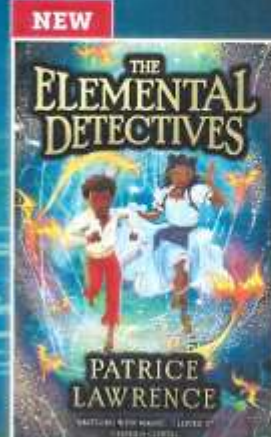
£7.99



£6.99



£6.99



£7.99

OVER 200 BOOKS TO CHOOSE FROM!



WISBECH
GRAMMAR SCHOOL

THE
GOOD
SCHOOLS
GUIDE

Open Morning

From Kindergarten to 6th Form

Saturday 01 October: 0900 - 1230

Register now: wisbechgrammar.com

**Discover
who we are...**



*Scan to
register*



01945 586750



admissions@wisbechgrammar.com