



# Clenchwarton Primary School

## Weekly Newsletter-6th October 2023



Hello everyone,

Some of our Year 2 children visited Lynn Sport on Thursday to attend the Active Kids Festival, a good time was had by all!

Thank you to the parents and carers who joined us on Thursday for an introduction to Learning with Parents platform, we hope this was beneficial and we look forward to seeing your child's work.

### HELLO YELLOW

On Tuesday 10th October we are asking pupils to come to school in yellow clothes {full non uniform} to raise awareness for children's mental health. We politely ask for any donations to be given through the JustGiving page {link below} as we will not be accepting any cash donations.

[https://www.justgiving.com/page/clenchwarton-primary-school-1694633402140?utm\\_medium=fundraising&utm\\_content=page%2Fclenchwarton-primary-school-1694633402140&utm\\_source=copyLink&utm\\_campaign=pfp-share](https://www.justgiving.com/page/clenchwarton-primary-school-1694633402140?utm_medium=fundraising&utm_content=page%2Fclenchwarton-primary-school-1694633402140&utm_source=copyLink&utm_campaign=pfp-share)

As always, we want to ensure that your experience at Clenchwarton Primary is a positive one and we will keep you informed of your child's progress or any other incidents which happen in school. If you have any concerns, in the first instance, please telephone or email the school office.

Best wishes

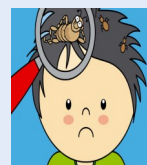
Ms J Borley  
(Executive Headteacher)



Thank you for your support with the Scholastic book fair this week, it has been a great success!  
We hope you enjoy your purchases.

### Head lice

Please check your child's hair as soon as possible and treat, if necessary.  
Thank you.



## Attendance

Reception:	99.09%	Year 1:	96.43%
Year 2:	99.23%	Year 3:	98%
Year 4:	95.33%	Year 5:	97%
Year 6:	97.78%		

**Congratulations to \*Year 2\***

### Polite Reminder

Please be reminded that the double gates are for entry to the *school and* the single gate is to be used on exit, so we can ensure that everybody is safe. Thank you.

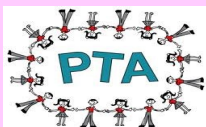


[www.clenchwartonprimary.co.uk](http://www.clenchwartonprimary.co.uk)

Governors email address: [r.wenn@westnorfolkacademiestrust.co.uk](mailto:r.wenn@westnorfolkacademiestrust.co.uk)



## P.T.A.



### Upcoming events:-

**Tuesday 21st November 2023**—Disco—More details to follow:  
KS1— 4.45pm to 5.45pm.  
KS2—6pm to 7pm.

**Friday 8th December 2023**—Xmas Fair-3.30pm to 5.30pm. More details to follow.

**Wednesday 7th February 2024** - Disco

**Tuesday 23rd April 2024**— PTA bingo

**Wednesday 22nd May 2024**—KS1 cinema club

**Thursday 23rd May 2024**—KS2 cinema club

**Friday 5th July 2024**—Summer Fayre

If you have any queries, please speak to Miss Kelly Childerhouse (Chair). [clenchwartonpta@gmail.com](mailto:clenchwartonpta@gmail.com)

Thank you for your support.

PTA

A massive 'thank you' to everyone that supported at the PTA bingo event, proceeds of which will go towards our conservation area at Clenchwarton Primary School.

### Water Bottles

Please make sure that only water is in your child's class water bottle. They are allowed squash for their lunch box drinks (No fizzy or Prime bottles please).



### Healthy Snacks

Pupils can bring in a healthy snack to eat at playtime. E.g. fruit, cereal bars (**no nuts**), raisins, vegetable sticks, etc.

Crisps and chocolate are not allowed as a snack but can be put in your child's lunch box for lunchtime. We are encouraging a healthy lifestyle!



## Attendance & Pastoral Support

Gail Scott is our Attendance and Pastoral support officer for Clenchwarton Primary School. Mrs Scott can be contacted by emailing:- [g.scott@westnorfolkacademiustrust.co.uk](mailto:g.scott@westnorfolkacademiustrust.co.uk)



### Have your circumstances changed recently?

You may be eligible for Free School Meals!

The school receives funding for each child who comes under Pupil Premium (including FSM). You can apply online:-

<https://www.gov.uk/apply-free-school-meals>.

#### **Families in hardship and needing wider support**

In addition to the offer of FSM vouchers for eligible families, there is support available for families who are facing hardship and need support. Anyone experiencing hardship may be able to receive support through the Norfolk Assistance Scheme (NAS), which may be able to provide support for food, fuel, clothes and other essential household items to families experiencing hardship. Wider support from a range of partners can then also be made available with NAS working alongside the Children's Services Community and Partnerships service. Families may get in touch with NAS via their dedicated website which includes an online application form, at [Norfolk Assistance Scheme - Norfolk County Council](#) or if they cannot access the internet, they can call **0344 800 8020**.



### ParentPay Lunches

**Please** book school lunches via ParentPay before midnight on a **Sunday**. Thank you.

Please make any outstanding payments on ParentPay ASAP. All payments will need to be made online as we are now a cashless school.



Price increase from 1st April 2023 will be £2.50 per meal.

#### **Free Schools Meals on-Line**

Please visit:- <https://www.gov.uk/apply-free-school-meals>.

## Lunchtime Co

Please see the school website for the menu. If your child has any dietary requirements that we are not aware of, please inform the school office. **All Bookings should be made via ParentPay, by midnight on a Sunday. If you do not choose your child's option, we will only be able to provide your child with a hot meal from now on.** Please note that due to food supply issues the kitchen are doing their very best to accommodate, but the menu may be subject to change. Thank you.



# Flu immunisation for pupils in school years Reception - Year 11

DEAR PARENT/CARER,

The flu vaccine is being offered at your child's school again this autumn/winter.

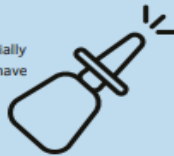
To give consent for your child to have the flu vaccine, please click here:

<https://eastanglia.schoolvaccination.uk/flu/2023/norfolk>

Even if you do not wish for your child to have the vaccine, please complete the online form so that we can record your wishes.

## THE NASAL FLU VACCINE

- ✓ Protects your child from the flu.
- ✓ Protects your family and friends from the flu (especially those who are elderly, young babies, or those who have serious health conditions).
- ✓ Is painless, quick and effective.
- ✓ Is free



## THE IM FLU VACCINE



We also offer the flu vaccine as an injection, which is **gelatine-free**. This may also be the vaccine of choice for vegans. Please go to our website where you can find out more about the manufacturing of the flu injection, and then decide if the injection is more suited to your child.

You only need to complete one consent form for each child. If you later change your mind, please call your local team. If your child has this immunisation elsewhere after you have submitted the consent form, you **MUST** inform Vaccination UK rather than the school.

We understand that you may have questions about the vaccine. For more information, please go to our website, where you can find a list of FAQ's, as well as details of our community catch up clinics. We also have some FAQ's enclosed below.

You can also find informational videos on our YouTube channel, including subtitled versions for other languages.

Yours Faithfully,  
Your Local Immunisation Team  
Vaccination UK



Vaccination UK

NORFOLK  
Immunisation Team  
Contact Details



[norfolk@v-uk.co.uk](mailto:norfolk@v-uk.co.uk)



01603 394 103

WORKING ON BEHALF OF

**NHS**  
England

## USEFUL INFO



We endeavour to come to your child's school twice. If they are absent or unable to be vaccinated at school, you will need to attend one of our community clinics for the vaccine. Details of these can be found on our website or you can contact the team above.



**PLEASE NOTE** the flu vaccine will **NOT** be available to otherwise healthy children after December 15th at all, and so we urge you to return the consent form as soon as possible in case we are not able to visit your child's schools for a second visit this year.



Your consent will remain in place for the entire flu season. If your child misses a first visit, you do not need to complete a second form.

## USEFUL LINKS



[www.schoolvaccination.uk/nasal-flu](http://www.schoolvaccination.uk/nasal-flu)

[www.youtube.com/@vaccinationuk](https://www.youtube.com/@vaccinationuk)



## PRIVACY POLICY

Our 2023/24 policy can be viewed here:  
[www.schoolvaccination.uk/privacy-policy](http://www.schoolvaccination.uk/privacy-policy)  
For data protection queries, please contact:  
[dpo@vaccinationuk.co.uk](mailto:dpo@vaccinationuk.co.uk)

PAGE 1



## ADDITIONAL INFORMATION

\*The consent form needs to be signed by a person with parental responsibility which includes:

- Mother: automatic
- Father: if married to the mother either when baby is born or marries subsequently
- Unmarried father: if name appears on birth certificate (since 1/12/03) or legally acquired
- Others: if parental responsibility is legally acquired
- Parental Responsibility Agreement: signed, properly witnessed and sent for registration to Principle Registry or the Family Division (High Court)
- Residence Order: granted by the Court

Please note that young people under the age of 16 can give or refuse consent if considered competent to do so by nursing staff.

## FREQUENTLY ASKED QUESTIONS

### Are there any side effects of the vaccine?

Possible side effects are: decreased appetite, headache, a runny or blocked nose, and sometimes a raised temperature. These are common, but they pass quickly and can be treated with paracetamol or ibuprofen if you feel your child needs it.

### Are there any children who shouldn't have the nasal vaccine?

You should let us know if your child has any of the following:

- A very severe allergy to eggs, egg proteins, gentamicin or gelatine – it is important for us to know if your child has been admitted to hospital with a condition called anaphylaxis, triggered by these things.
- Are currently wheezy or have been wheezy in the past 72 hours with asthma. There is an alternative flu vaccine that we can talk to you about to ensure that your child is protected as soon as possible.
- Have a condition that severely weakens their immune system.

Also, children who have been vaccinated should avoid close contact with people with very severely weakened immune systems for around two weeks following vaccination (By severely weakened, we generally mean people who are isolating, such as those who have received some types of chemotherapy or people who have had a bone marrow transplant, for example). This is because there's an extremely remote chance that the vaccine virus may be passed to them.

Contact with other healthy children or adults does not need to be limited after having the vaccine.

### We do not eat pork products.

### Can my child have a different flu vaccine?

Yes. There is a flu vaccine available, in the form of an injection.

The nasal flu vaccine is the best vaccine for children and young people under 18 years of age as it is more effective at stopping the spread of flu and it is painless, but it does have a highly processed form of gelatine (porcine gelatine), which is used in a range of many essential medicines. The gelatine helps to keep the vaccine viruses stable so that the vaccine provides the best protection against flu.

If your faith or beliefs mean you would prefer a vaccine that has no pork (porcine gelatine) in it, please complete the consent for the flu injection only. You do not need to complete a form for both.

If your child is vegan, please note that the flu injection is a cell based vaccine. For more information, please see our FAQs page on our website:

<https://www.schoolvaccination.uk/nasal-flu>

PAGE 2




## Diary Dates



**\*Please be aware that dates are for guidance only and are subject to change.**

Diary dates are also located on the school website. Please note that the West Norfolk Academies Trust school calendar for 2023/2024 2024/2025 can be located from the school's website. School holiday dates are slightly different to NCC.

Monday 9th October 2023	Year 4—Trip to West Stow Anglo Saxon Village.
Tuesday 10th October 2023	Hello Yellow Day in support of Mental Health week—justgiving.com
Tuesday 17th October 2023	Year 6—National Child Measurement Programme (NCMP) - Email now sent. Harvest Assembly—All donations will go to The King's Lynn Foodbank .
Thursday 19th October	Year 3—Trip to Houghton Hall . Letter emailed & payment via ParentPay.
Friday 20th October 2023	Break up for half term at the usual time.
Monday 23rd to Friday 27th October 2023	School Closed
Monday 30th October 2023	School opens-8.45am registration.
Wednesday 1st November 2023	Lilac moon –Individual photos.
Thursday 2nd November 2023	SSP Cross Country—Yrs3-6—Selected. Class Assembly—Year 1—Parents/Carers invited .2.50pm
Thursday 9th November 2023	Open Afternoon-3.30pm-4.15pm.
Monday 13th November 2023	NHS Flu immunisation session – More details to follow
Thursday 16th November 2023	Class Assembly—Year 2—Parents/Carers invited. 2.50pm
Tuesday 21st November 2023	Year 1—Trip to Trues Yard-More details to follow. Open Afternoon—3.30pm-4.15pm
Thursday 23rd November 2023	Class Assembly—Year 2—Parents/Carers invited. 2.50pm
Monday 27th November 2023	SSP Tag Rugby—Yr 5—selected
Thursday 30th November 2023	Class Assembly—Year 5—Parents/Carers invited. 2.50pm
Tuesday 5th December 2023	Class Assembly—Year R—Parents/Carers invited. 2.50pm
Thursday 7th December 2023	Class Assembly—Year 6—Parents/Carers invited. 2.50pm
Wednesday 20th December 2023	Break up for Christmas holidays. School closes at the usual time.
Thursday 4th January 2024	School opens-8.45am registration.
Friday 16th February 2024	School closes at the usual time of 3.15pm for half term.
Monday 26th February 2024	School opens-8.45am registration.
Tuesday 12th March 2024	YrR NCMP/ Vision and Hearing - More details to follow
Wednesday 1st May 2024	Yr6 Crucial Crew visit—More details to follow.



**Clenchwarton Primary School**  
**Open Afternoon**  
**9th & 21st November 2023—3.30pm–4.15pm**

*Come and visit us at Clenchwarton Primary. We understand making your child's school choice can be difficult but we can all work together and learn together to make it the best possible experience of all.*

Visit our website at [www.clenchwartonprimary.co.uk](http://www.clenchwartonprimary.co.uk)

*We look forward to seeing you.*





**After School Clubs will run from w/c Monday 11th September 2023 to Friday 15th December 2023**

**unless otherwise stated.**

**Autumn 1 & 2 term**

Day	After School Club	Who with:
Tuesday	Multi-sports	ICS coaching
Tuesday	Cross Stitch (Yr5 & Yr6) Year 5 & Year 6 only—6 weeks only. Starting on Tuesday 12th September and ending on Tuesday 17th October 2023.	Mrs Tarsey & Mrs Williams
Wednesday	Young Voices Yr4-Yr6 (need to be committed to this event.)	Miss Welch & Miss Webb
Thursday	Multi-sports	<a href="https://premier-education.com">premier-education.com</a> to book!
Friday	Gymnastics	Premier Sports <a href="https://premier-education.com">premier-education.com</a> to book!

*This is for your information:- Pupils to be shown how to dress appropriately for PE/Swimming (appropriate clothing, long hair tied back away from the eyes, no hard head accessories)*

**Earrings.** Ideally pupils will remove earrings however, pupils unable to remove earrings should make them safe by taping, front and back, which may offer a measure of protection. The taping should be sufficient to prevent the stud post penetrating the bone behind the ear should an unintentional blow be received from equipment such as a ball or a person. The taping may be done at home for younger children (as stated Safe Practice in PE and School Sport and Physical Activity 2016).

**Before & After School Clubs at your School...**

**What's happening at your school:**  
Clenchwarton Primary School

Monday – Friday  
Before school club | £4 per session | 7.40am

**Sport Active After School Clubs**

Monday – Multi-sports  
Friday - Gymnastics

3.15pm – 4.15pm | £68.25 | 13 week block

Limited To 20 Spaces  
Avoid disappointment, visit  
[premier-education.com](https://premier-education.com) to book!!

- Kickstart the day with our brilliant before-school sessions

- Let loose with lunchtime activities

- Keep on moving with awesome after-school clubs

Over the past 20 years, we've expanded our term-time offer of school activities to include sessions held before the school day begins, in lessons – covering or supplementing existing lessons, at lunchtimes as an extra chance to get active, or after-school, giving parents a more convenient pickup time while the kids keep engaged.

Before, Lunchtime & After School Clubs for Children Age 4 - 11.  
To book now, visit [premier-education.com](https://premier-education.com)

Follow our socials - search Premier - Cambridgeshire & West Norfolk

## Community News



*Dame Kitty Litter*  
in

**DARE YOU JOIN US?**

**CALLING ALL ADVENTURERS**

Inviting all pupils, parents, staff and friends of  
**Clenchwarton Primary School**  
Come and join us for some  
Halloween Pantomime fun  
**SPOOKTACULAR Show**  
for ALL the family

**Halloween PHANTOMIME**  
**WONDER WITCH**  
**WICKED WAY?**

Written and Directed by John Giller

**TRICK or TREAT**  
Come in HALLOWEEN Fancy Dress  
We DARE you

[www.kingslynncornexchange.co.uk](http://www.kingslynncornexchange.co.uk) BOX OFFICE 01553 764864  
**Friday 27th and Saturday 28th October 2023**



# Get Help

**Samaritans**  
116 123

**Lily**  
01553 616200

**Wellbeing  
Service**  
0300 123 1503



**Wellbeing**

**Family Lives  
Helpline**  
0808 800 2222

**ECFS  
(ages 0-5)**  
0344 800 8020

**Parentline Text**  
07520 631590



**Parenting**

**Just One Norfolk**  
0300 300 0123

**NHS 111 Online**  
111

**Change Grow Live**  
01603 514096



**Health**

**West Norfolk  
Carers**  
01553 768155

**Carers Matter**  
0800 083 1148

**Short Breaks**  
0344 800 8020



**Caring**



**Safety**

**Worried about a child's safety?**

Children's Services 0344 800 8020  
or NSPCC 0808 800 5000

**In an emergency 999**



**Food Banks**

**King's Lynn**  
07582 558143

**Hunstanton**  
07795 491154

**Downham Market**  
07707 191674



**Money Matters**

**Money Advice Hub**  
0333 305 7648

**Norfolk  
Assistance Scheme**  
0344 800 8020

**Christian's  
Against Poverty**  
0800 328 006



**Housing Advice**

**West Norfolk  
Housing**  
01553 616200

**Shelter (King's Lynn)**  
0344 515 1860



**Relationships**

**Norfolk Family  
Mediation**  
01603 620588

**Norfolk Community  
Law Service**  
01603 496623

**National Domestic  
Abuse Helpline**  
0808 2000 247



## PRIMARY SCHOOLS - Term Dates 2023-2024

September 2023						
M	T	W	T	F	S	S
				1	2	3
4	5	6	7	8	9	10
11	12	13	14	15	16	17
18	19	20	21	22	23	24
25	26	27	28	29	30	

October 2023						
M	T	W	T	F	S	S
						1
2	3	4	5	6	7	8
9	10	11	12	13	14	15
16	17	18	19	20	21	22
23	24	25	26	27	28	29
30	31					

November 2023						
M	T	W	T	F	S	S
		1	2	3	4	5
6	7	8	9	10	11	12
13	14	15	16	17	18	19
20	21	22	23	24	25	26
27	28	29	30			

December 2023						
M	T	W	T	F	S	S
				1	2	3
4	5	6	7	8	9	10
11	12	13	14	15	16	17
18	19	20	21	22	23	24
25	26	27	28	29	30	31

January 2024						
M	T	W	T	F	S	S
1	2	3	4	5	6	7
8	9	10	11	12	13	14
15	16	17	18	19	20	21
22	23	24	25	26	27	28
29	30	31				

February 2024						
M	T	W	T	F	S	S
			1	2	3	4
5	6	7	8	9	10	11
12	13	14	15	16	17	18
19	20	21	22	23	24	25
26	27	28	29			

March 2024						
M	T	W	T	F	S	S
				1	2	3
4	5	6	7	8	9	10
11	12	13	14	15	16	17
18	19	20	21	22	23	24
25	26	27	28	29	30	31

April 2024						
M	T	W	T	F	S	S
1	2	3	4	5	6	7
8	9	10	11	12	13	14
15	16	17	18	19	20	21
22	23	24	25	26	27	28
29	30					

May 2024						
M	T	W	T	F	S	S
		1	2	3	4	5
6	7	8	9	10	11	12
13	14	15	16	17	18	19
20	21	22	23	24	25	26
27	28	29	30	31		

June 2024						
M	T	W	T	F	S	S
					1	2
3	4	5	6	7	8	9
10	11	12	13	14	15	16
17	18	19	20	21	22	23
24	25	26	27	28	29	30

July 2024						
M	T	W	T	F	S	S
1	2	3	4	5	6	7
8	9	10	11	12	13	14
15	16	17	18	19	20	21
22	23	24	25	26	27	28
29	30	31				

August 2024						
M	T	W	T	F	S	S
			1	2	3	4
5	6	7	8	9	10	11
12	13	14	15	16	17	18
19	20	21	22	23	24	25
26	27	28	29	30	31	

Key: White dates – school open to pupils

Orange dates – pupil holiday

Purple dates – staff training day

Red dates – bank holiday

Staff training days are – Monday 4<sup>th</sup> September and Tuesday 5<sup>th</sup> September, Wednesday 3<sup>rd</sup> January and

Thursday 28<sup>th</sup> March 2024 as whole training days.

Monday 22<sup>nd</sup> July 2024 is disaggregated.