



# Clenchwarton Primary School

## Weekly Newsletter-15th December 2023



Hello everyone,

Another busy week!

Thank you for all your support with the Christmas Fayre on Friday. A total of £827.50 was raised.

The KS1 performances of 'Everyone Loves a Baby' have taken place this week. The children were amazing and we hope you had a wonderful time watching these performances!

The West Norfolk Academies Trust have kindly offered to pay for the children's Christmas Lunch which took place today, Friday 15th December 2023. All bookings for this day will be refunded (if applicable) to your account after 15th December. Thank you.

We are supporting two charities this year, The Norfolk Hospice (Rudolph Run) and Save the Children (Christmas Jumper Day). These will take place on Friday 15th December 2023. We are kindly asking for a donation of £1 per child. All the money raised will then be equally split between these two charities. Payment can be made via your ParentPay account. Thank you for your support..

The KS2 Christmas Concert will take place next Tuesday 19th December 2023. at 2pm All tickets have now been allocated.

As always, we want to ensure that your experience at Clenchwarton Primary is a positive one and we will keep you informed of your child's progress or any other incidents which happen in school. If you have any concerns, in the first instance, please telephone or email the school office.

Best wishes

Ms J Borley  
(Executive Headteacher)



## Attendance

Reception: 95.65%

Year 1: 94.64%

Year 2: 95.56%

Year: 3: 95.33%

Year 4: 93.33%

Year 5 : 98%

Year 6: 96.3%

**Congratulations to \*Year 5\***



[www.clenchwartonprimary.co.uk](http://www.clenchwartonprimary.co.uk)

Governors email address: [r.wenn@westnorfolkacademiestrust.co.uk](mailto:r.wenn@westnorfolkacademiestrust.co.uk)



## P.T.A.

### Upcoming events:-

Thank you to everyone for the support for the Christmas Fayre. It was an amazing turn out and raised a total of £827.50.

**Wednesday 7th February 2024**—Disco

**Tuesday 23rd April 2024**— PTA bingo

**Wednesday 22nd May 2024**—KS1 cinema club

**Thursday 23rd May 2024**—KS2 cinema club

**Friday 5th July 2024**—Summer Fayre

**We wish you all a very Merry Christmas and thank you for all your support.**

If you have any queries, please speak to Miss Kelly Childerhouse (Chair). [clenchwartonpta@gmail.com](mailto:clenchwartonpta@gmail.com)

Thank you for your support.

PTA



## Water Bottles

Please make sure that only water is in your child's class water bottle. They are allowed squash for their lunch box drinks (No fizzy or Prime bottles please).



## Healthy Snacks

Pupils can bring in a healthy snack to eat at playtime. E.g. fruit, cereal bars (**no nuts**), raisins, vegetable sticks, etc.

Crisps and chocolate are not allowed as a snack but can be put in your child's lunch box for lunchtime. We are encouraging a healthy lifestyle!



## Polite Reminder

Please be reminded that the double gates are for entry to the school and the single gate is to be used on exit. This is so we can ensure that everybody is safe.

Thank you.

As the weather is turning colder could you please ensure your child comes to school suitably *dressed for the elements*.

Thank you.

## Have your circumstances changed recently?

You may be eligible for Free School Meals!

The school receives funding for each child who comes under Pupil Premium (including FSM). You can apply online:-

<https://www.gov.uk/apply-free-school-meals>.

### Families in hardship and needing wider support

In addition to the offer of FSM vouchers for eligible families, there is support available for families who are facing hardship and need support. Anyone experiencing hardship may be able to receive support through the Norfolk Assistance Scheme (NAS), which may be able to provide support for food, fuel, clothes and other essential household items to families experiencing hardship. Wider support from a range of partners can then also be made available with NAS working alongside the Children's Services Community and Partnerships service. Families may get in touch with NAS via their dedicated website which includes an online application form, at [Norfolk Assistance Scheme - Norfolk County Council](https://www.norfolkassistance.co.uk) or if they cannot access the internet, they can call **0344 800 8020**.



## ParentPay Lunches

**Please** book school lunches via ParentPay before midnight on a **Sunday**. Thank you.

Please make any outstanding payments on ParentPay ASAP. All payments will need to be made online as we are now a cashless school.



Price increase from 1st April 2023 will be £2.50 per meal.

### Free Schools Meals on-Line

Please visit:- <https://www.gov.uk/apply-free-school-meals>.

## Lunchtime Co—NEW MENU TO USE FROM W/C 30.10.2023

Please see the school website for the menu. If your child has any dietary requirements that we are not aware of, please inform the school office. **All Bookings should be made via ParentPay, by midnight on a Sunday. If you do not choose your child's option, we will only be able to provide your child with a hot meal from now on. Our Christmas lunch will be served on Friday 15th December 2023.** Please note that due to food supply issues the kitchen are doing their very best to accommodate, but the menu may be subject to change. Thank you.





PHOTOs from the Rudolf Run /KS1 Nativity & Yr4 Church visit







## Diary Dates



**\*Please be aware that dates are for guidance only and are subject to change.**

Diary dates are also located on the school website. Please note that the West Norfolk Academies Trust school calendar for 2023/2024 2024/2025 can be located from the school's website. School holiday dates are slightly different to NCC.

<b>Monday 18th December 2023</b>	KS1 Christmas Performance at Springwood 12:30pm. Class Christmas party—Y3/Y4.
<b>Tuesday 19th December 2023</b> 	KS2 Christmas Concert—2pm parents /carers welcome. Tickets all now allocated.  Class Christmas party—YR .
<b>Wednesday 20th December 2023</b>	Christmas Class Parties—Y1/Y2 , Y5/Y6  <b>Break up for Christmas holidays. School closes at the usual time.</b>
<b>Thursday 4th January 2024</b> 	<b>School opens 8.45am registration.</b>  Due to supply issues there will be a change to the menu. Todays main meal will be pizza instead of roast chicken. Sorry for any inconvenience.
<b>Friday 19th January 2024</b>	Choir Club—Young Voices @ O2 Arena, London.
<b>Thursday 25th January 2024</b>	Active Kids Festival –Lynn sport, selected children KS1.
<b>Friday 2nd February 2024</b>	NSPCC Number Day.
<b>Monday 12th February 2024</b>	New date—SSP Tag Rugby—Year 5—Selected.
<b>Friday 16th February 2024</b>	School closes at the usual time of 3.15pm for half term.
<b>Monday 26th February 2024</b>	School opens 8.45am registration.
<b>Wednesday 6th March 2024</b>	SSP Dance Festival Corn Exchange– More details to follow.
<b>Tuesday 12th March 2024</b>	YrR NCMP/ Vision and Hearing - More details to follow
<b>Thursday 14th March 2024</b>	SSP Bee Netball Festival Year 3&4—More details to follow.
<b>Thursday 21st March 2024</b>	Year 6—Trip to Duxford Imperial War Museum—More details to follow.
<b>Wednesday 24th April 2024</b>	Year 4— Trip to be confirmed.
<b>Wednesday 1st May 2024</b>	Yr6 Crucial Crew visit—More details to follow.
<b>Monday 8th to Friday 12th July 2024</b>	Year 6 Hilltop residential.





**After School Clubs will run from w/c Monday 8th January to Friday 22nd March 2023**

**unless otherwise stated.**

**Spring 1 & 2 terms**

Day	After School Club	Who with:
Tuesday	Multi-sports Computer Club—KS2	ICS coaching—Booking via ParentPay Mrs Howells-Booking via ParentPay
Wednesday	Young Voices Yr4-Yr6 (This club will continue to run for a further 2 weeks for existing pupils on 10th and 17th January 2024—no additional cost for these two dates.	Miss Welch & Miss Webb
Thursday	Basketball	Premier Sports <a href="http://premier-education.com">premier-education.com</a> to book!
Friday	Gymnastics	Premier Sports <a href="http://premier-education.com">premier-education.com</a> to book!

*This is for your information:- Pupils to be shown how to dress appropriately for PE/Swimming (appropriate clothing, long hair tied back away from the eyes, no hard head accessories)*

**Earrings.** Ideally pupils will remove earrings however, pupils unable to remove earrings should make them safe by taping, front and back, which may offer a measure of protection. The taping should be sufficient to prevent the stud post penetrating the bone behind the ear should an unintentional blow be received from equipment such as a ball or a person. The taping may be done at home for younger children (as stated Safe Practice in PE and School Sport and Physical Activity

**Before & After School Clubs at your School...**

**What's happening at your school:**  
Clenchworth Primary School

**Monday - Friday**  
Before school club | £4 per session | 7.40am

**Sports Active After School Clubs**

**Monday - Multi-sports**  
**Friday - Gymnastics**

**3.15pm - 4.15pm | £68.25 | 13 week block**

**Limited To 20 Spaces**  
Avoid disappointment, visit [premier-education.com](http://premier-education.com) to book!

Over the past 20 years, we've expanded our term-time offer of school activities to include sessions held before the school day begins, in lessons - covering or supplementing existing lessons, at lunchtimes as an extra chance to get active, or after-school, giving parents a more convenient pickup time while the kids keep engaged.

**Before, Lunchtime & After School Clubs for Children Age 4 - 11.**  
To book now, visit [premier-education.com](http://premier-education.com)

Follow our socials - search Premier - Cambridge & West Norfolk

**Trustpilot**  
Based on 4,000+ reviews  
**Premier Education**

AFTER SCHOOL



# BASKETBALL CLUB

**Premier Education** | INSPIRING ACTIVITY

SCAN HERE FOR MORE INFORMATION  
premier-education.com/parents

Trustpilot  
★★★★★  
Based on over 15,000 reviews

## BASKETBALL CLUBS AT YOUR SCHOOL

Venue: Clenchwarton Primary School

Dates: 11th Jan - 21st March

Times: 3.15pm - 4.15pm

Price: £52.50

Ages: Open to all

Additional info: 10 Sessions - maximum of 20

Basketball is the perfect sport for developing spatial awareness and communication. Basketball improves throwing, catching, running and jumping - all fundamental skills which can be applied through a range of sports.

Through a range of games, challenges and matches, each child will get to experience the many aspects of this fantastic team sport.

Book now for an extracurricular club they will never forget.

“Very happy with my daughter's basketball classes, I love the teamwork she receives from the staff and well, if my daughter is happy, I'm another 100% happy!”  
- John - Parent

SCAN HERE FOR MORE INFORMATION  
premier-education.com/parents

Trustpilot  
★★★★★  
Based on over 15,000 reviews

AFTER SCHOOL



# GYMNASTICS CLUB

**Premier Education** | INSPIRING ACTIVITY

SCAN HERE FOR MORE INFORMATION  
premier-education.com/gymnastics

Trustpilot  
★★★★★  
Based on over 15,000 reviews

## GYMNASTICS CLUBS AT YOUR SCHOOL

Venue: Clenchwarton Primary School

Dates: Friday 12th Jan - 22nd March

Times: 3.15pm - 4.15pm

Price: £52.50

Ages: Open to all

Additional info: 10 weeks - Maximum 20 spaces

Our gymnastics clubs are a fantastic way for your child to experience gym - whether they are a regular gymnast, or it's their first time!

As a 'foundation sport', gymnastics uses strength, balance, coordination, and teaches children to develop the fundamental movement skills they need to lead a physically active lifestyle, as well as a healthy range of social and academic skills.

Book now for an extracurricular club they will never forget.

“My children love the gymnastics classes and they are always keen to show us what they have learnt when they get home.”  
- John - Parent

SCAN HERE FOR MORE INFORMATION  
premier-education.com/gymnastics

Trustpilot  
★★★★★  
Based on over 15,000 reviews

## Start Active Before School Club

Morning childcare for busy parents.



Taking place in your school this term

SCAN HERE FOR MORE INFORMATION  
or visit [www.premier-education.com/parents/clubcare/](http://www.premier-education.com/parents/clubcare/)

Trustpilot  
★★★★★  
Based on over 15,000 reviews

## Let us take care of your childcare!

Evidence shows that a dose of physical activity before school hours start helps to engage children's minds and prepare them for the day ahead.

Our breakfast clubs offer mentally and physically stimulating activities which sharpen and focus the mind while waking up the body.

Parents can relax knowing their children are in safe hands as all staff have experience working with primary school children, have been DBS checked, and hold Emergency First Aid and Safeguarding certificates.

**15% discount for siblings**

Clenchwarton Primary School

Before School  
7:40am - 8:40am = £4.00

Book now at:  
[www.premier-education.com](http://www.premier-education.com)

Contact us at:  
[clubcare@premier-education.com](mailto:clubcare@premier-education.com)

**Premier Education**



## COMMUNITY NEWS



**CHRISTINGLE SERVICE**  
at  
**ST MARGARET'S CHURCH**  
on  
**SUNDAY 24<sup>TH</sup> DECEMBER**



**4PM**



**ALL WELCOME**

**COFFEE CLUB**

 **The Walks Stadium  
Kings Lynn**

*Feel Good  
Fridays*

**Every Friday**  
**8th December - 23rd February**  
**12:30PM - 2:30PM**

-  **Free Admission**
-  **Free Refreshments**
-  **Commitment to providing a warm place this winter**



# COMMUNITY NEWS

## DRAGON ARTS



Come and join our art club at St. George's Guildhall for fun, creative sessions led by a professional artist. Learn new skills and express yourself through drawing, painting, sculpting and more.

**Fortnightly on Saturdays starting 6th January 2024**

**11:00am – 12:30pm**

**Ages 5-11**

**£3 per child (booking essential)**

**To book, please visit [www.guildhall-events.co.uk](http://www.guildhall-events.co.uk)**

**Shakespeare Barn, St. George's Guildhall, 29 King Street, King's Lynn. PE30 1HA**

Created by  
King's Lynn &  
Norfolk Arts Trust



St. George's Guildhall

Partners  
Norfolk  
County Council



Norfolk  
County Council

Sponsored by  
Norfolk  
Arts Trust

In collaboration with  
National Trust

## CLENCHWARTON PHOTOGRAPHY COMPETITION

CATEGORIES:

UNDER 12 YEARS  
50p PER PHOTO

£25 PRIZE

12 - 17 YEARS  
50p PER PHOTO

18 YEARS & OVER  
£1 PER PHOTO

(MAXIMUM 3 PHOTOS PER PERSON)

DEADLINE 31st MARCH 2024

Photographs must be recently taken within the village of Clenchwarton

Suggested printed size of photos 10 x 8 inches

Entry forms can be collected from the church

For further details, please contact  
Jan 07725 940453

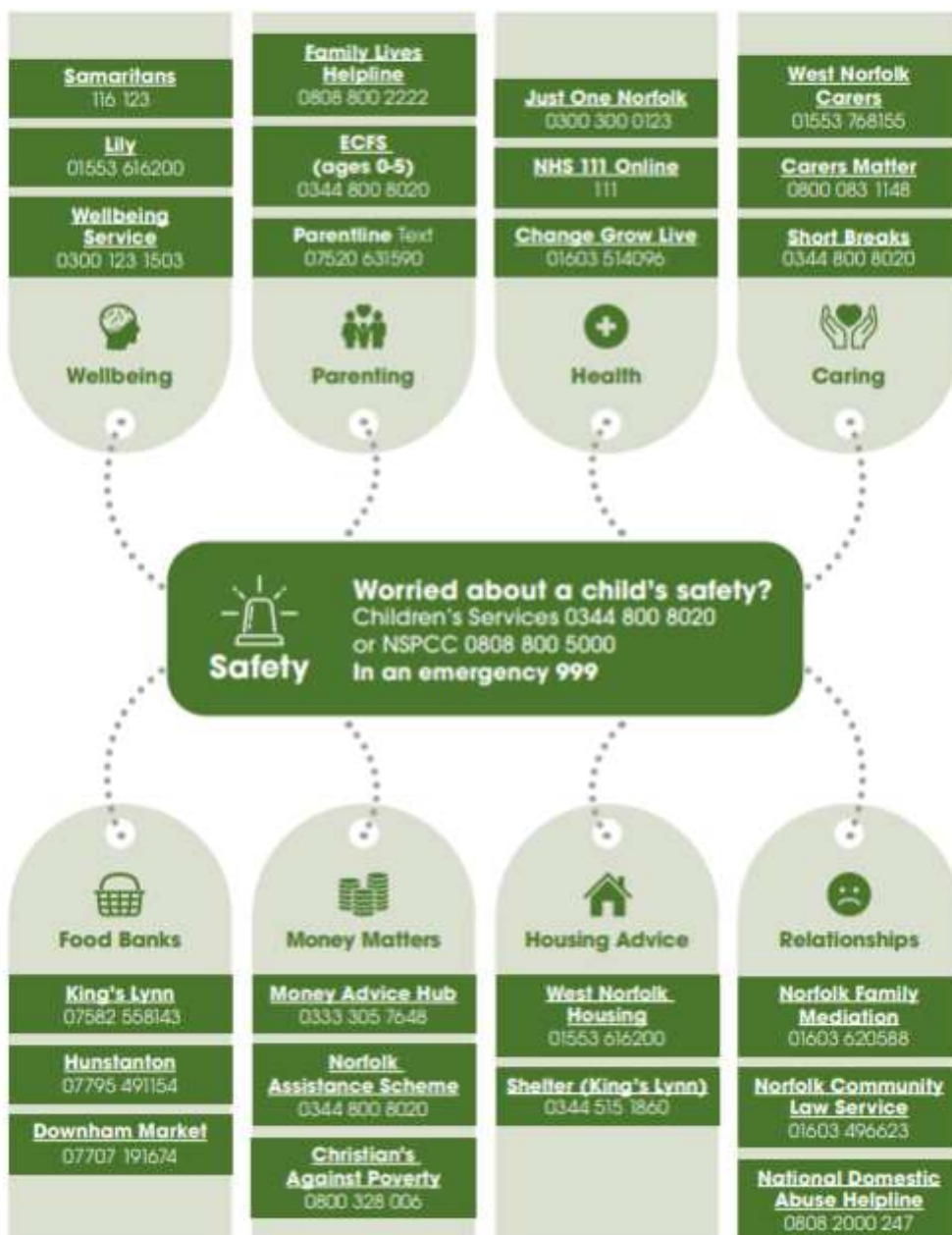
All proceeds for  
St Margaret's  
Church,  
Clenchwarton







# Get Help



## PRIMARY SCHOOLS - Term Dates 2023-2024

September 2023						
M	T	W	T	F	S	S
				1	2	3
4	5	6	7	8	9	10
11	12	13	14	15	16	17
18	19	20	21	22	23	24
25	26	27	28	29	30	

October 2023						
M	T	W	T	F	S	S
						1
2	3	4	5	6	7	8
9	10	11	12	13	14	15
16	17	18	19	20	21	22
23	24	25	26	27	28	29
30	31					

November 2023						
M	T	W	T	F	S	S
		1	2	3	4	5
6	7	8	9	10	11	12
13	14	15	16	17	18	19
20	21	22	23	24	25	26
27	28	29	30			

December 2023						
M	T	W	T	F	S	S
				1	2	3
4	5	6	7	8	9	10
11	12	13	14	15	16	17
18	19	20	21	22	23	24
25	26	27	28	29	30	31

January 2024						
M	T	W	T	F	S	S
1	2	3	4	5	6	7
8	9	10	11	12	13	14
15	16	17	18	19	20	21
22	23	24	25	26	27	28
29	30	31				

February 2024						
M	T	W	T	F	S	S
			1	2	3	4
5	6	7	8	9	10	11
12	13	14	15	16	17	18
19	20	21	22	23	24	25
26	27	28	29			

March 2024						
M	T	W	T	F	S	S
				1	2	3
4	5	6	7	8	9	10
11	12	13	14	15	16	17
18	19	20	21	22	23	24
25	26	27	28	29	30	31

April 2024						
M	T	W	T	F	S	S
1	2	3	4	5	6	7
8	9	10	11	12	13	14
15	16	17	18	19	20	21
22	23	24	25	26	27	28
29	30					

May 2024						
M	T	W	T	F	S	S
		1	2	3	4	5
6	7	8	9	10	11	12
13	14	15	16	17	18	19
20	21	22	23	24	25	26
27	28	29	30	31		

June 2024						
M	T	W	T	F	S	S
					1	2
3	4	5	6	7	8	9
10	11	12	13	14	15	16
17	18	19	20	21	22	23
24	25	26	27	28	29	30

July 2024						
M	T	W	T	F	S	S
1	2	3	4	5	6	7
8	9	10	11	12	13	14
15	16	17	18	19	20	21
22	23	24	25	26	27	28
29	30	31				

August 2024						
M	T	W	T	F	S	S
			1	2	3	4
5	6	7	8	9	10	11
12	13	14	15	16	17	18
19	20	21	22	23	24	25
26	27	28	29	30	31	

Key: White dates – school open to pupils

Orange dates – pupil holiday

Purple dates – staff training day

Red dates – bank holiday

Staff training days are – Monday 4<sup>th</sup> September and Tuesday 5<sup>th</sup> September, Wednesday 3<sup>rd</sup> January and

Thursday 28<sup>th</sup> March 2024 as whole training days.

Monday 22<sup>nd</sup> July 2024 is disaggregated.