

Clenchwarton Primary School

Weekly Newsletter - 5th March 2020



Hello everyone,

The children have had a lovely day with the Travelling by Tuba workshop which took place this morning in school. The special World Book Day lunch was a success!



Registration is at 8.50am prompt. Please ensure that your child is in school before this time, but not earlier than 8.40am as no supervision is provided (please drop your child(ren) at the brown wooden gate-Reception, Yr1, Yr2 & Yr3 only), together with all their P.E. kit and appropriate outdoor clothing (all named please). If your child is ill, please telephone or leave a message for the school office.

We are now using 'twitter'. Teachers will be in charge of this account. Please let us know if you do not wish for your child to be included. Please sign up via ParentPay. Our page can be located using the following link.

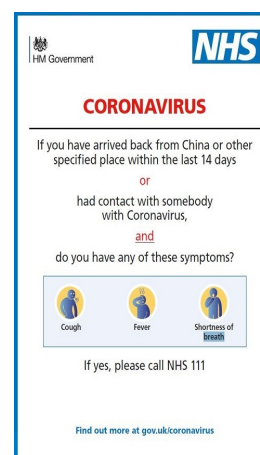
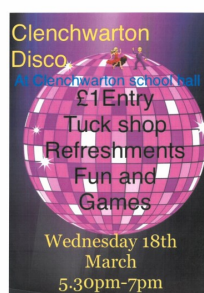


<https://Twitter.com/@clenchwartonsch>

As always, we want to ensure that your experience at Clenchwarton Primary is a positive one. If you have any concerns, in the first instance, please speak to your class teacher. Appointments can be made through school office.

Thank you.

Ms J Borley
(Executive Headteacher)



Golden Awards

this week



Well done to everyone who has achieved an award this week!

Annie Jacob Thalia Holly Lexi Ava-Mae Zack Imogen Lily Kade

Attendance

Reception:	93.53%	Year 1:	98.28%
Year 2:	91.38%	Year 3:	97.98%
Year 4:	99.58%	Year 5:	98.96%
Year 6:	98.91%		

Congratulations Year 4.

www.clenchwarton.norfolk.sch.uk

Governors email address: chairofgov@clenchwartonprimary.co.uk

P.T.A.

Hello everyone,

Upcoming events:-

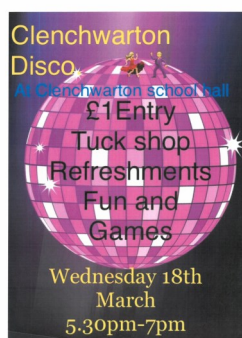
Easter Disco—School Hall-18th March 2020—£1 per child for entry. 5.30pm to 7pm.

Uniform orders-Update:-

As from Monday 2nd March 2020, all school uniform orders will now be ordered direct through Stratford's in King's Lynn. Please contact 01553 772043 direct.

Thank you once again for all your support.

Rachel Ballantyne
(PTA Chair)



School Closures



Please be assured that the school always makes every effort to open – whatever the weather! However, should the worst happen and it became necessary to close, we would try to give as much notice as possible. During bad weather, if necessary, we will communicate via:

Text via PupilAsset.

Publish it on the Norfolk Schools Website

www.schoolclosures.norfolk.gov.uk

or KLFM 96.7

Also, Norfolk County Council now offers the option for you to sign up to receive alerts by text message or email whenever your school is closed. To sign up for alerts or find out more, visit: www.norfolk.gov.uk/disruptions.

Clothing

Please ensure that your child brings a suitable outdoor coat and appropriate footwear when coming into school. Please make sure that they have their name inside.

Please dress suitably for the weather now that it is colder.

Thank you.



School Calendar

Please note that the West Norfolk Academies Trust school calendar for 2019/2020, 2020/21 & 2021/2023 can be located from the school's website. School holiday dates are slightly different to NCC. Thank you.



Head lice



Please check your child's hair as soon as possible and treat, if necessary. Thank you.



Lost Property—The lost property bins can be found on the KS2 playground and in the KS1 area. Please check these for any misplaced items. **Please kindly ensure that all items of clothing are clearly labelled.**



ParentPay Lunches



Please book school lunches via ParentPay before midnight on a **Sunday**. Thank you.

Please make any outstanding payments on ParentPay ASAP.

Free Schools Meals on-Line

From 16th September 2019 you can file an application on-line. Please visit:-

www.norfolk.gov.uk/neo.

Thank you.

Junior Leadership Team (J.L.T.)

The aim of the team is to give our children the chance to have leadership responsibility within the school, ensuring that their voices and opinions are heard. Members of the J.L.T. will be assigned a different Curriculum subject and they will work alongside a teacher to help monitor the subject that is being taught in the classrooms. They will spend some time with the teacher, looking at classroom environments, looking through a selection of their subject books and will also have the chance to talk to pupils in other classes about their subject. They will work with the Senior Leadership Team to help improve the school.

JLT

Light the way the Junior Leadership way.



Lunchtime Co

Please see the school website for the menu. Bookings via ParentPay, by midnight on a Sunday.



Thank you.



Diary Dates

***Please be aware that dates are for guidance only and are subject to change.**

Diary dates are also located on the school website.

Tuesday 10th March 2020	H5 Netball—Yr 5 & Yr 6—selected.
Tuesday 17th March 2020	Yr6 Transition less at St Clements-during school day.
Wednesday 18th March 2020	PTA—School disco—Hall-5.30pm-7pm
Tuesday 24th March 2020	Yr4—Holkham Hall Trip—Payment via ParentPay. Thank you.
Wednesday 25th March 2020	Yr2-Sainsbury Centre Norwich-Letter to follow.
Wednesday 25th March to Wednesday 1st April 2020	Scholastic Book Fair arrives. - School Hall between 3.15pm—3.45pm
Monday 30th March 2020	Yr4-End of term workshop (Yr4 Recorders) @ Springwood High School-Details. Letter to follow.
Thursday 2nd April 2020	Special Easter lunch—Letter to follow. School closes at usual time of 3.15pm
Friday 3rd April 2020	School closed. Inset day.
Monday 6th April to Friday 17th April 2020	School Closed for Easter holiday.
Monday 20th April 2020	School re-opens at usual time for 8.50am prompt start.
Tuesday 22nd April 2020	Cluster Tri-Golf—Yr 1, Yr 2, Yr 3 & Yr 4—Selected.
Tuesday 28th April 2020	Yr6 Transition lesson at St Clements-during the school day.
Wednesday 29th April 2020	Yr6 Crucial Crew Trip— More details to follow. Yr5—Gressenhall-More details to follow. SSP Tri-Golf—Yr 1, Yr 2, Yr 3 & Yr 4—Selected.
Wednesday 6th May 2020	Lilacmoon—Class photos.
Friday 8th May 2020	May Bank Holiday
Monday 25th May to Friday 29th May 2020	School closed. Half term.
Friday 17th July 2020	School closes at usual time of 3.15pm for summer holidays.
Monday 7th September 2020	School re-opens at usual time. 8.50am prompt start.

After Schools Clubs

Afterschool clubs are still available for Netball and Football. Please see school office.

PE/After School Clubs.

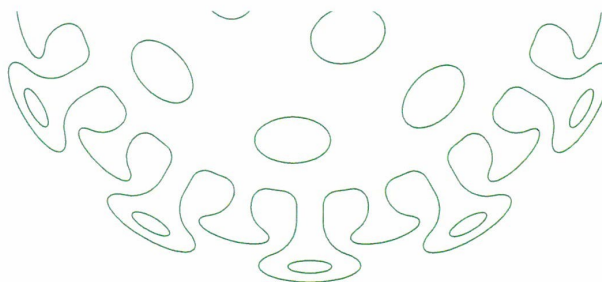
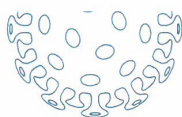
This is for your information:- Pupils to be shown how to dress appropriately for PE (appropriate clothing, long hair tied back away from the eyes, no hard head accessories)

Earrings. Ideally pupils will remove earrings however, pupils unable to remove earrings should make them safe by taping, front and back, which may offer a measure of protection. The taping should be sufficient to prevent the stud post penetrating the bone behind the ear should an unintentional blow be received from equipment such as a ball or a person. The taping may be done at home for younger children (as stated Safe Practice in PE and School Sport and Physical Activity 2016).

Morning Club Spaces are available for the morning club which runs everyday in the hall from 7.40 am-8.40 am @ £2.50 per session. If you would like your child to take part. Please email icscoachinget@gmail.com or telephone 07876141107. If your child is not attending an afternoon club for any reason, please inform the school office with the reason. Thank you.



Public Health
England



Advice on the coronavirus for places of education

How serious is the coronavirus?

- it can cause flu-like symptoms, including fever, cough & difficulty breathing
- the infection is not serious for most people, including children
- there is currently no vaccine
- most people get better with enough rest, water to drink and medicine for pain

How likely are you to catch the virus?

- you can only catch it if you have been close to a person who has the virus
- the chance of being in contact with the virus is currently low in the UK
- if you have travelled to areas where many people are infected, your chance of catching the virus is higher, i.e. China and any affected areas

How can you stop coronaviruses spreading?

If you need to cough or sneeze



Catch it
with a tissue



Bin it



Kill it
by washing
your hands with
soap & water or
hand sanitiser

You should wash hands with soap & water or hand sanitiser



**After breaks
& sport
activities**



**Before
cooking
& eating**



**SCHOOL
ETC.**
**On arrival at
any childcare
or educational
setting**



**After using
the toilet**



**Before
leaving
home**



**Try not to touch your
eyes, nose, and mouth
with unwashed hands**



**Do not share items that come
into contact with your mouth
such as cups & bottles**



**If unwell do not share
items such as bedding,
dishes, pencils & towels**



Stop germs spreading with our e-Bug resources on hand and respiratory hygiene lesson plans for KS1, 2 and 3: campaignresources.phe.gov.uk/schools

What should you do if you feel unwell?

Keep away from others and stay at home to stop the infection spreading. Avoid public transport if you think you have symptoms of coronavirus. If you become unwell at a place of education, tell a member of staff and let them know if you have travelled to any other countries in the last 14 days.

If your staff member or parent thinks you have symptoms of coronavirus, they should call **NHS 111** for advice. Follow the UK Government advice for childcare or educational settings gov.uk/government/publications/guidance-to-educational-settings-about-covid-19. Parents can visit NHS.UK to find out more information. Teachers and support staff should follow the UK Government advice.

Staff, students and pupils who have returned from Wuhan and Hubei Province in China should self isolate, and NOT attend education or work for 14 days. See NHS.UK for advice on coronavirus.

If there is an emergency, call 999 immediately





in aid of
pancreatic
cancer
action



Coffee Morning

ALL PROCEEDS GO TO PANCREATIC
CANCER ACTION

17TH APRIL, 2020

WEST LYNN COMMUNITY SPORTS &
SOCIAL CLUB

ST PETER'S RD, KING'S LYNN
PE34 3LB
10AM - 1PM

BAKES

A wide variety of homemade bakes, many suited for those with dietary requirements. Prices starting at 50p.

GAMES

For all to join in with, from trying your luck at tombola, entering a baking competition, guessing the number of sweets in a jar to a brain teaser.

COFFEE

Tea and a range of soft drinks, to catch up with others over.

PLEASE CONTACT
EHAILSTONE2003@GMAIL.COM TO RSVP
AND FOR ANY QUERIES