

# Clenchwarton Primary School

## Weekly Newsletter - 12th March 2020



Hello everyone,

Well done to the children who took part with the Hi5 Netball this week.

As part of **Sports Relief 2020**, the children will be taking part in a sponsored walk around the playing field on **Friday 13th March 2020 during the afternoon** - weather permitting of course. All children will take part and will walk at their own pace. All children will need to bring their school PE kits and trainers to school on **Friday**.

In order to raise money we are hoping the children may get some sponsorship from family and friends. Your child should have brought home a sponsor form which should be returned please by **Friday 13th March** along with any monies raised.

Registration is at 8.50am prompt. Please ensure that your child is in school before this time, but not earlier than 8.40am as no supervision is provided (please drop your child(ren) at the brown wooden gate-Reception, Yr1, Yr2 & Yr3 only), together with all their P.E. kit and appropriate outdoor clothing (all named please). If your child is ill, please telephone or leave a message for the school office.

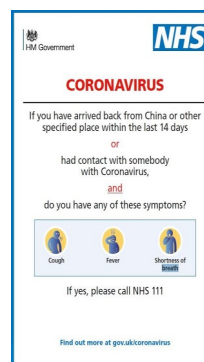
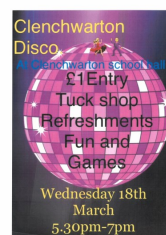
We are now using 'twitter'. Teachers will be in charge of this account. Please let us know if you do not wish for your child to be included. Please sign up via ParentPay. Our page can be located using the following link.

<https://Twitter.com/@clenchwartonsch>

As always, we want to ensure that your experience at Clenchwarton Primary is a positive one. If you have any concerns, in the first instance, please speak to your class teacher. Appointments can be made through school office.

Thank you.

**Ms J Borley**  
(Executive Headteacher)



### Golden Awards

#### this week

**Well done to everyone who has achieved an award this week!**



### Attendance

Reception:	98.28%	Year 1:	96.12%
Year 2:	90.52%	Year 3:	100%
Year 4:	94.17%	Year 5:	99.48%
Year 6:	94.57%		

**Congratulations Year 3.**

**[www.clenchwarton.norfolk.sch.uk](http://www.clenchwarton.norfolk.sch.uk)**

Governors email address: [chairgov@clenchwartonprimary.co.uk](mailto:chairgov@clenchwartonprimary.co.uk)

## P.T.A.

Hello everyone,

Upcoming events:-

Easter Disco—School Hall  
-18th March 2020—£1 per  
child for entry. 5.30pm to  
7pm.

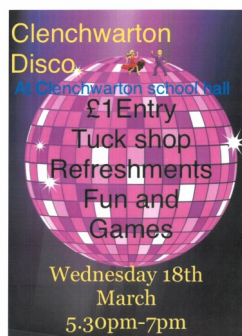
Bingo-School Hall-27th  
April 2020. Eyes down at  
7pm. Any unwanted gifts  
for raffle prizes would be  
much appreciated. Please  
hand into the school office.  
Thank you.

### Uniform orders-Update:-

**As from Monday 2nd March 2020, all school  
uniform orders will now be ordered direct  
through Stratford's in King's Lynn. Please con-  
tact 01553 772043 direct.**

Thank you once again for all  
your support.

Rachel Ballantyne  
(PTA Chair)



## School Closures



Please be assured that the  
school always makes every effort to open – whatever  
the weather! However, should the worst happen and  
it became necessary to close, we would try to give as  
much notice as possible. During bad weather, if nec-  
essary, we will communicate via:

Text via PupilAsset.

Publish it on the Norfolk Schools Website

[www.schoolclosures.norfolk.gov.uk](http://www.schoolclosures.norfolk.gov.uk)

or KLFM 96.7

Also, Norfolk County Council now offers the option  
for you to sign up to receive alerts by text message or  
email whenever your school is closed. To sign up for  
alerts or find out more, visit: [www.norfolk.gov.uk/  
disruptions](http://www.norfolk.gov.uk/disruptions).

## Clothing

Please ensure that your child brings a suit-  
able outdoor coat and appropriate foot-  
wear when coming into school. Please make  
sure that they have their name inside.

Please dress suitably for the  
weather now that it  
is colder.

Thank you.



## School Calendar

Please note that the West Norfolk Academies Trust school calen-  
dar for 2019/2020, 2020/21 & 2021/2023 can be  
located from the school's website. School holiday  
dates are slightly different to NCC. Thank you.



## Head lice



Please check your child's hair as soon as  
possible and treat, if necessary. Thank you.



**Lost Property**—The lost property bins can be  
found on the KS2 playground and in the KS1  
area. Please check these for  
any is placed items. **Please**  
**kindly ensure that all items of**  
**clothing are clearly labelled.**



## ParentPay Lunches



**Please** book school lunch-  
es via ParentPay before  
midnight on a **Sunday**.  
Thank you.

Please make any outstand-  
ing payments on ParentPay  
ASAP.

### **Free Schools Meals on- Line**

From 16th September 2019  
you can file an application on  
-line. Please visit:-

[www.norfolk.gov.uk/neo](http://www.norfolk.gov.uk/neo).

Thank you.

## Junior Leadership Team (J.L.T.)

The aim of the team is to give our children the chance to have  
leadership responsibility within the school, ensuring that their  
voices and opinions are heard. Members of the J.L.T. will be  
assigned a different Curriculum subject and they will work  
alongside a teacher to help monitor the subject that is being  
taught in the classrooms. They will spend some time with the  
teacher, looking at classroom environments, looking through a  
selection of their subject books and  
will also have the chance to talk to  
pupils in other classes about their  
subject. They will work with the  
Senior Leadership Team to help  
improve the school.

JLT

Light the way the Junior Leadership way.



## Lunchtime Co

Please see  
the school  
website for  
the menu. Bookings  
via ParentPay, by mid-  
night on a Sunday.



Thank you.



## Diary Dates

**\*Please be aware that dates are for guidance only and are subject to change.**

**Diary dates are also located on the school website.**

Friday 13th March 2020	Sport Relief event—Sponsor forms to office please. Children need PE kit.
Monday 16th March 2020	Yr 2—First Aid Training during school day.
Tuesday 17th March 2020	Yr6 Transition less at St Clements-during school day. Yr 4—First Aid Training during the school day.
Wednesday 18th March 2020	PTA—School disco—Hall-5.30pm-7pm
Tuesday 24th March 2020	Yr4—Holkham Hall Trip—Payment via ParentPay. Thank you.
Wednesday 25th March 2020	Yr2-Sainsbury Centre Norwich-Payment via ParentPay. Thank you. Yr5-Aboriginal Australian Workshop-Donation via ParentPay. Thank you.
Wednesday 25th March to Wednesday 1st April 2020	Scholastic Book Fair arrives. - School Hall between 3.15pm—3.45pm
Monday 30th March 2020	Yr4-End of term workshop (Yr4 Recorders) @ Springwood High School-Details. Letter to follow.
Wednesday 1st April 2020	Yr4—Times Tables Bee—during the school day—Mrs Ryan
Thursday 2nd April 2020	Special Easter lunch—Letter to follow. School closes at usual time of 3.15pm
Friday 3rd April 2020	School closed. Inset day.
Monday 6th April to Friday 17th April 2020	School Closed for Easter holiday.
Monday 20th April 2020	School re-opens at usual time for 8.50am prompt start.
Tuesday 22nd April 2020	Cluster Tri-Golf—Yr 1, Yr 2, Yr 3 & Yr 4—Selected.
Tuesday 28th April 2020	Yr6 Transition lesson at St Clements-during the school day.
Wednesday 29th April 2020	Yr6 Crucial Crew Trip— More details to follow. Yr5—Gressenhall-More details to follow. SSP Tri-Golf—Yr 1, Yr 2, Yr 3 & Yr 4—Selected.
Wednesday 6th May 2020	Lilacmoon—Class photos.
Friday 8th May 2020	May Bank Holiday
Monday 25th May to Friday 29th May 2020	School closed. Half term.
Tuesday 23rd June 2020	Yr3—Kentwell Hall Trip-More details to follow.
Tuesday 7th July 2020	Yr4 & Yr 5 OAE music project day time rehearsal Tue 7th July Performance to parents from 5.30pm @ Springwood High School
Friday 17th July 2020	School closes at usual time of 3.15pm for summer holidays.
Monday 7th September 2020	School re-opens at usual time. 8.50am prompt start.

## After Schools Clubs

Afterschool clubs are still available for Netball and Football. Please see school office.

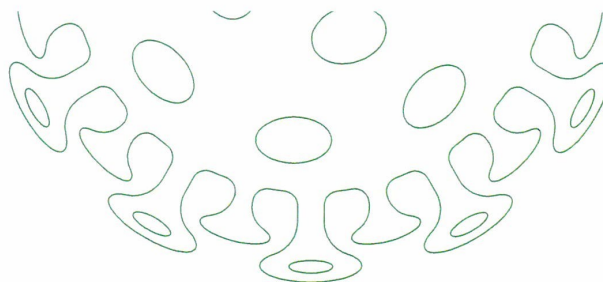
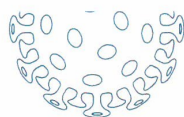
PE/After School Clubs.

**Morning Club** Spaces are available for the morning club which runs everyday in the hall from 7.40 am-8.40 am @ £2.50 per session. If you would like your child to take part. Please email [icscoachinget@gmail.com](mailto:icscoachinget@gmail.com) or telephone 07876141107. If your child is not attending an afternoon club for any reason, please inform the school office with the reason. Thank you.





Public Health  
England



# Advice on the coronavirus for places of education

## How serious is the coronavirus?

- it can cause flu-like symptoms, including fever, cough & difficulty breathing
- the infection is not serious for most people, including children
- there is currently no vaccine
- most people get better with enough rest, water to drink and medicine for pain

## How likely are you to catch the virus?

- you can only catch it if you have been close to a person who has the virus
- the chance of being in contact with the virus is currently low in the UK
- if you have travelled to areas where many people are infected, your chance of catching the virus is higher, i.e. China and any affected areas

## How can you stop coronaviruses spreading?

### If you need to cough or sneeze



**Catch it**  
with a tissue



**Bin it**



**Kill it**  
by washing  
your hands with  
soap & water or  
hand sanitiser

### You should wash hands with soap & water or hand sanitiser



**After breaks  
& sport  
activities**



**Before  
cooking  
& eating**



**SCHOOL  
ETC.**  
**On arrival at  
any childcare  
or educational  
setting**



**After using  
the toilet**



**Before  
leaving  
home**



**Try not to touch your  
eyes, nose, and mouth  
with unwashed hands**



**Do not share items that come  
into contact with your mouth  
such as cups & bottles**



**If unwell do not share  
items such as bedding,  
dishes, pencils & towels**



Stop germs spreading with our e-Bug resources on hand and respiratory hygiene lesson plans for KS1, 2 and 3: [campaignresources.phe.gov.uk/schools](https://campaignresources.phe.gov.uk/schools)

## What should you do if you feel unwell?

Keep away from others and stay at home to stop the infection spreading. Avoid public transport if you think you have symptoms of coronavirus. If you become unwell at a place of education, tell a member of staff and let them know if you have travelled to any other countries in the last 14 days.

If your staff member or parent thinks you have symptoms of coronavirus, they should call **NHS 111** for advice. Follow the UK Government advice for childcare or educational settings [gov.uk/government/publications/guidance-to-educational-settings-about-covid-19](https://gov.uk/government/publications/guidance-to-educational-settings-about-covid-19). Parents can visit [NHS.UK](https://NHS.UK) to find out more information. Teachers and support staff should follow the UK Government advice.

Staff, students and pupils who have returned from Wuhan and Hubei Province in China should self isolate, and NOT attend education or work for 14 days. See [NHS.UK](https://NHS.UK) for advice on coronavirus.

**If there is an emergency, call 999 immediately**







in aid of  
pancreatic  
cancer  
**action**



# Coffee Morning

ALL PROCEEDS GO TO PANCREATIC  
CANCER ACTION

---

**17TH APRIL, 2020**

WEST LYNN COMMUNITY SPORTS &  
SOCIAL CLUB

ST PETER'S RD, KING'S LYNN  
PE34 3LB  
10AM - 1PM

## **BAKES**

A wide variety of homemade bakes, many suited for those with dietary requirements. Prices starting at 50p.

## **GAMES**

For all to join in with, from trying your luck at tombola, entering a baking competition, guessing the number of sweets in a jar to a brain teaser.

## **COFFEE**

Tea and a range of soft drinks, to catch up with others over.

PLEASE CONTACT  
EHAILSTONE2003@GMAIL.COM TO RSVP  
AND FOR ANY QUERIES